

Cynulliad Cenedlaethol Cymru | National Assembly for Wales

Pwyllgor Plant, Pobl Ifanc ac Addysg | Children, Young People and Education Committee

Ymchwiliad i Gynlluniau Strategol Cymraeg mewn Addysg | Inquiry into Welsh in Education Strategic Plans

WESP 34

Ymateb gan : J Jones

Response from : J Jones

I would like to submit the attached data sets and analysis which clearly indicates that pupils from non-Welsh speaking homes do not reach their potential in Welsh medium schools. They are disadvantaged by being taught in a language other than their first language and it is very important that parents are made aware of this fact. In the fro Cymraeg, where pupils from English speaking homes are discriminated against by having no access to English medium schools it is important that the same parental preference surveys that parents can fill in to demand Welsh medium schooling elsewhere are also available in the fro so that parents can demand English medium schooling.

The original data is from the Welsh Government by FOI. Analysis and graphs are my own but completely consistent with the information given.

Comparison of GCSE results 2014 at A*-B, Maths and English, speaks Welsh at home/Does not... ATISN

9101, <http://gov.wales/about/foi/responses/2015/Jan15/atish9101/?lang=en>

Welsh first language GCSE results 2014 by Speaks Welsh at home/ does not...ATISN 9231,

<http://gov.wales/docs//decisions/2015/education/150313atish9231doc1.pdf>

Key stage 2 results < level 4, level 5 or higher by FSM grouping, medium of schooling, Speaks Welsh at home/ does not speak...ATISN

8775, <http://gov.wales/about/foi/responses/dl2014/sept14/atish8775/?lang=en>

I think that's all that I have referenced.

Attainment indicators by school medium of pupils NOT eligible for free school meals, benchmarked by FSM, 2013-14

See Notes at bottom of spreadsheet

2013-14

FSM 3 year average of school	15 (not eligible for FSM)	Number of Pupils aged 15 (not eligible for FSM):				2130.0
		Entering GCSE Maths	Achieving A*-B in GCSE Maths	Entering GCSE English	Achieving A*-B in GCSE English	
English Medium schools						
0%-7%	2,130	2,110	1,120	2,103	1,323	2130.0
7%-14%	5,970	5,841	2,292	5,826	3,024	5970.0
14%-20%	4,859	4,799	1,550	4,772	2,121	4859.0
Welsh Medium schools (based only on pupils who do not speak Welsh at home)						
0%-7%	569	556	210	554	269	
7%-14%	1,947	1,905	607	1,900	899	
14%-20%	596	579	157	575	195	

Notes

Pupils aged 15 on 31 August 2013.

FSM data are based on 3 year averages.

Based only on pupils NOT eligible for FSM.

Only includes maintained mainstream secondary schools.

The FSM groups are as follows: 0%-7% (up to 7%), 7%-14% (greater than 7% and up to 14%), and 14%-20% (greater than 14% and up to 20%)

The Welsh Medium category includes bilingual schools.

For Welsh Medium schools, based only on pupils who do not speak Welsh at home.

Note that there may be some pupils attending English medium schools who do speak Welsh at home.

Based only on GCSEs in core Maths or core English language/literature (excludes short course GCSEs)

Derived from matching attainment data to pupils in PLASC, and therefore may not cover all pupils where matching wasn't

The number **entering** exams includes those pupils who might have sat an exam in Maths or English but did not necessarily pass.

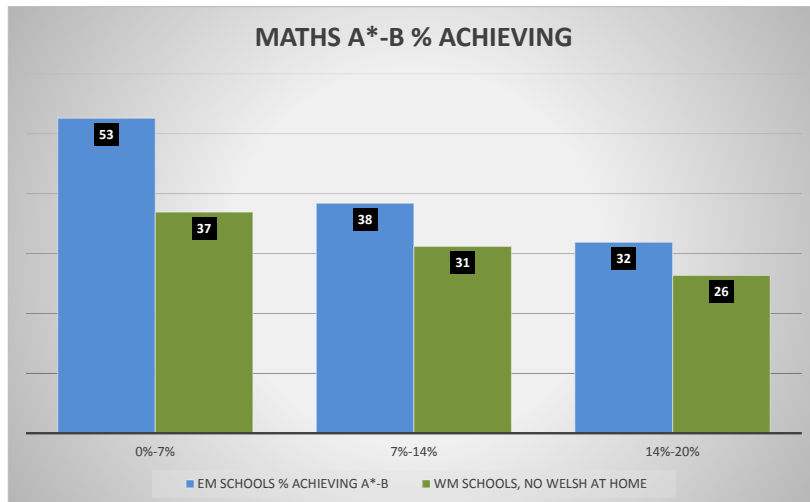
"*" Refers to a data item that has been suppressed as it is disclosive

"." Refers to a data item that is not applicable

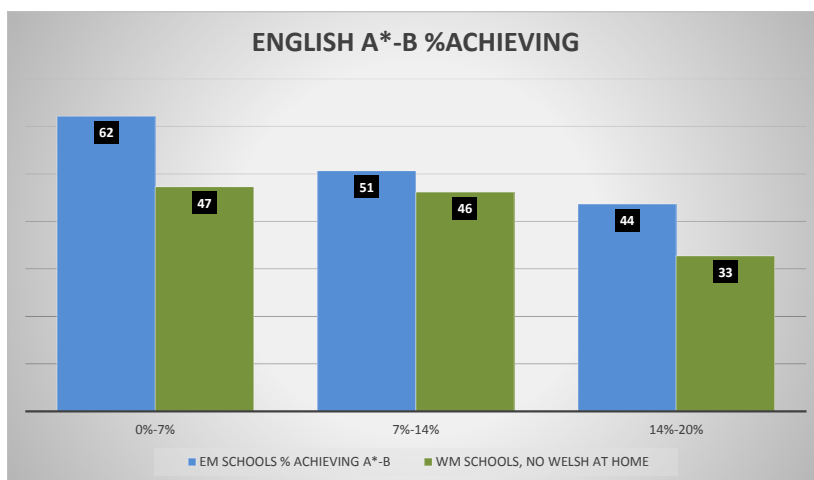
FSM 3 year average of school	Number of Pupils aged 15 (not eligible for FSM)	Number of Pupils aged 15 (not eligible for FSM):					
		Entering GCSE Maths	Achieving A*-B in GCSE Maths	% ACHIEVING A*-B MATHS	Entering GCSE English	Achieving A*-B in GCSE English	%ACHIEVING A*-B ENGLISH
English Medium schools							
0%-7%	2,130	2,110	1,120	53	2,103	1,323	62
7%-14%	5,970	5,841	2,292	38	5,826	3,024	51
14%-20%	4,859	4,799	1,550	32	4,772	2,121	44
Welsh Medium schools (based only on pupils who do not speak Welsh at home)							
0%-7%	569	556	210	37	554	269	47
7%-14%	1,947	1,905	607	31	1,900	899	46
14%-20%	596	579	157	26	575	195	33

MATHS ALL PUPILS NOT ELIGIBLE FOR FREE SCHOOL MEALS ONLY GCSE 2014

FSM %	EM SCHOOLS A*-B	WM SCHOOLS, NO WELSH AT HOME
0%-7%	53	37
7%-14%	38	31
14%-20%	32	26



FSM %	EM SCHOOLS A*-B	WM SCHOOLS, NO WELSH AT HOME
0%-7%	62	47
7%-14%	51	46
14%-20%	44	33



Data for 15 year old pupils in Wales, 2013-14

Number of 15 year old pupils entering a core GCSE in Welsh First Language or Literature in 2013/14: 5,548

Of these pupils, the number who:

Speak Welsh at home 2,963

Do not speak Welsh at home 2,570

Not applicable 15

Data for 15 year olds split by Welsh at Home, FSM Eligibility and best GCSE grade in Core Welsh First Language or Literature, 2013-14

Note that the table excludes the 'Not applicable' group from the data above

Speaks Welsh at home	Eligible for FSM	Best grade achieved in Core GCSE Welsh First Language or Literature									Totals
		A*	A	B	C	D	E	F	G	U	
Yes	Yes	*	10	26	58	47	25	6	*	*	177
Yes	No	247	475	690	847	358	112	50	*	*	2,786
No	Yes	*	*	24	85	78	35	21	*	0	251
No	No	53	223	466	871	455	161	64	*	*	2,319
											5,533

Notes

Pupils aged 15 on 31 August 2013.

Covers GCSE Single and Double awards in Core Welsh First Language or Literature.

Derived from matching attainment data to pupils in PLASC.

Includes all pupils who speak Welsh at home whether fluently or not.

"*" Refers to a data item that has been suppressed as it is potentially disclosive due to small numbers

2014 GCSE Welsh first language by eligibility for free school meals and home language.

FSM ELIGIBLE

GRADE	A*		A		B		C		D		E		F		G		U		TOTAL	ALL PUPILS A*-C	% OF PUPILS A*-C	ALL PUPILS A*-B	% OF PUPILS A*-B	ALL PUPILS A*-A	% OF PUPILS A*-A
	Count	%	Count	%	Count	%	Count	%	Count	%	Count	%	Count	%	Count	%									
Speaks W. at home	2	1.1	10	5.6	26	15	58	33	47	27	25	14	6	3.39	2	1.13	1	0.56	177	96	54.24	38	21.47	12	6.78
Does not speak Welsh at home	2	0.8	3	1.2	24	9.6	85	34	78	31	35	14	21	8.37	3	1.2	0	0	251	114	45.42	29	11.55	5	1.99
NOT FSM ELIGIBLE																									
Speaks W. at home	247	8.9	475	17	690	25	847	30	358	13	112	4	50	1.79	4	0.14	3	0.11	2,786	2,259	81.08	1412	50.68	722	25.92
Does not speak Welsh at home	53	2.3	223	9.6	466	20	871	38	455	20	161	6.9	64	2.76		24	2	0.09	2319	1613	69.56	742	32.00	276	11.90
	304	5.5	711	13	1,206	22	1,861	34	938	17	333	6	141	2.55	13	0.23	8	0.14	5,533	4,082	73.78	2221	40.14	1,015	18.34
% OF WELSH L1 EFSM	6																								
% OF ENG.L1 EFSM	9.8																								

All pupils A*-C	3872	100%
All pupils WAH A*-C	2259	58.342
All pupils no WAH A*-C	1613	41.658

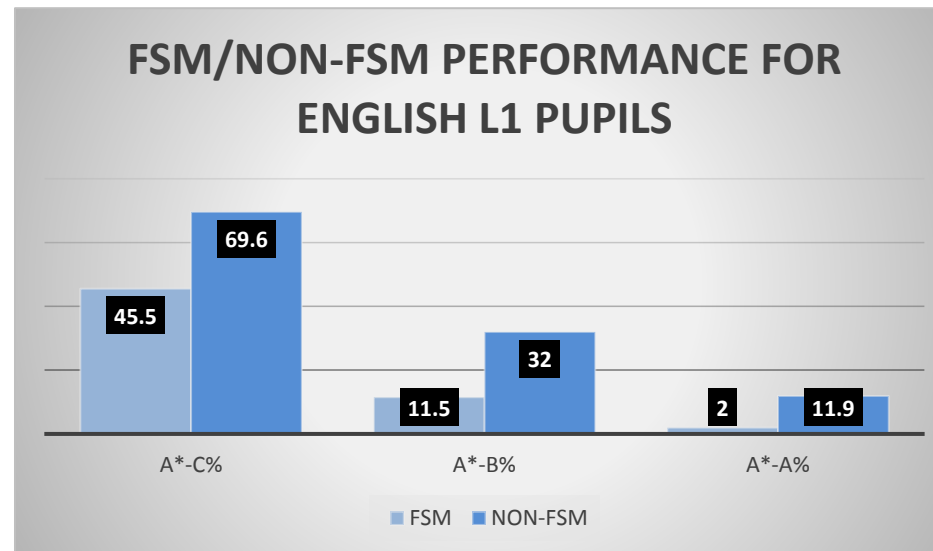
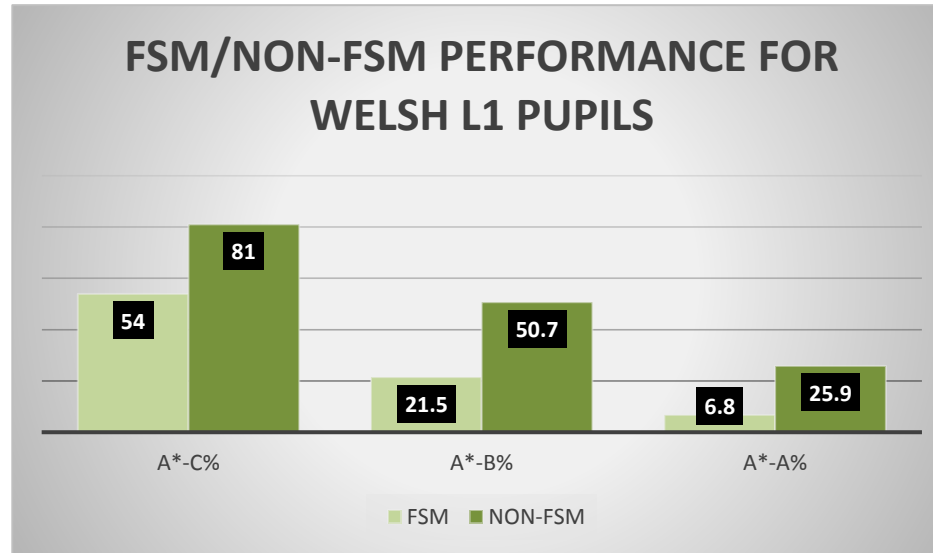
COMPARISON BETWEEN FSM AND NON FSM PERFORMANCE FOR PUPILS WHO SPEAK/DO NOT SPEAK WELSH AT HOME.

SPEAKS

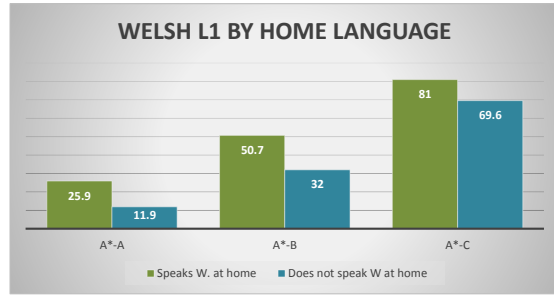
W. AT HOME	FSM	NON-FSM	DIFFERENCE
A*-C%	54	81	27
A*-B%	21.5	50.7	29.2
A*-A%	6.8	25.9	19.1

DOES NOT SPEAK

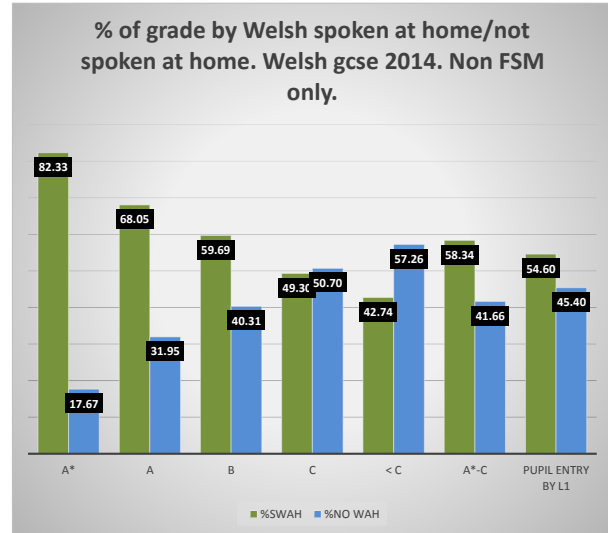
W. AT HOME	FSM	NON-FSM	DIFFERENCE
A*-C%	45.5	69.6	24.1
A*-B%	11.5	32	20.5
A*-A%	2	11.9	9.9



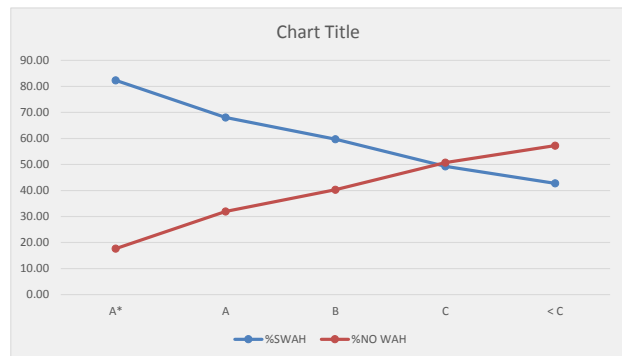
Welsh L1	Speaks W. at home	Does not speak W at home
A*-A	25.9	11.9
A*-B	50.7	32
A*-C	81	69.6



GRADE	% OF GRADE ATTAINED BY HOME LANGUAGE.				
	NUMBER	%SWAH	%NO WAH	SW	NO W
A*	300	82.33	17.67	247	53
A	698	68.05	31.95	475	223
B	1156	59.69	40.31	690	466
C	1718	49.30	50.70	847	871
< C	1233	42.74	57.26	527	706



GRADE	%SWAH	%NO WAH
A*	82.33	17.67
A	68.05	31.95
B	59.69	40.31
C	49.30	50.70
< C	42.74	57.26
A*-C	58.34	41.66
Pupil entry by L1	54.60	45.40



PERCENTAGE OF PUPILS WELSH L1 V PERCENTAGE OF PUPILS NO WELSH AT HOME

NUMBER SWAH	SPEAKS WAH	NUMBER NO WAH	% NOWAH	TOTAL
2789	54.60	2319	45.40	5108

Key Stage 2, Welsh Medium Schools, 2014, Speak Welsh at Home
For pupils not eligible for free school meals only

Cyfnod Allweddol 2, Ysgolion Cymraeg, 2014, Siarad Cymraeg yn y Cartref

Disgyblion nad sy'n gymwys am Prydau Ysgolion am Ddim yn unig.
Mae'r holl gwarteli wedi'u seilio ar y canran o ddisgyblion sy'n cyrraedd yn is na'r lefel
disgywliedig (<Lefel 4)

All benchmarks are based on the percentage of pupils achieving less than the expected level (<Level 4)

WELSH MEDIUM SCHOOLS: Schools with up to 8 per cent eligible for FSM				YSGOLION CYMRAEG: Ysgolion â hyd at 8 y cant yn gymwys i gael PYD							
	Number of Pupils Nifer y Disgyblion	Number of schools Nifer o ysgolion	Maximum Uchafswm	Upper Quartile Chwartel Uchaf	Median Canolrif	Lower Quartile Chwartel Isaf	Minimum Isafswm	Minimum Isafswm			
English	1,202	134	60	9	0	0	0	0	Saesneg		
Welsh First Language	1,200	134	50	9	0	0	0	0	Cymraeg Iaith Gyntaf		
Mathematics	1,202	134	50	10	0	0	0	0	Mathemateg		
Science	1,203	135	50	1	0	0	0	0	Gwyddoniaeth		
Core Subject Indicator	1,202	134	50	12	0	0	0	0	Pangosydd Pynciau Craidd		

WELSH MEDIUM SCHOOLS: Schools with over 8 per cent and up to 16 per cent eligible for FSM				YSGOLION CYMRAEG: Ysgolion â mwy na 8 y cant a hyd at 16 y cant yn gymwys i gael							
	Number of Pupils Nifer y Disgyblion	Number of schools Nifer o ysgolion	Maximum Uchafswm	Upper Quartile Chwartel Uchaf	Median Canolrif	Lower Quartile Chwartel Isaf	Minimum Isafswm	Minimum Isafswm			
English	830	129	50	10	0	0	0	0	Saesneg		
Welsh First Language	809	126	57	9	0	0	0	0	Cymraeg Iaith Gyntaf		
Mathematics	829	128	50	10	0	0	0	0	Mathemateg		
Science	830	129	50	0	0	0	0	0	Gwyddoniaeth		
Core Subject Indicator	829	128	50	11	0	0	0	0	Pangosydd Pynciau Craidd		

WELSH MEDIUM SCHOOLS: Schools with over 16 per cent and up to 24 per cent eligible for FSM				YSGOLION CYMRAEG: Ysgolion â mwy na 16 y cant a hyd at 24 y cant yn gymwys i gael							
	Number of Pupils Nifer y Disgyblion	Number of schools Nifer o ysgolion	Maximum Uchafswm	Upper Quartile Chwartel Uchaf	Median Canolrif	Lower Quartile Chwartel Isaf	Minimum Isafswm	Minimum Isafswm			
English	428	69	33	0	0	0	0	0	Saesneg		
Welsh First Language	417	67	33	10	0	0	0	0	Cymraeg Iaith Gyntaf		
Mathematics	428	69	67	7	0	0	0	0	Mathemateg		
Science	428	69	33	0	0	0	0	0	Gwyddoniaeth		
Core Subject Indicator	428	69	67	8	0	0	0	0	Pangosydd Pynciau Craidd		

WELSH MEDIUM SCHOOLS: Schools with over 24 per cent and up to 32 per cent eligible for FSM				YSGOLION CYMRAEG: Ysgolion â mwy na 24 y cant a hyd at 32 y cant yn gymwys i gael							
	Number of Pupils Nifer y Disgyblion	Number of schools Nifer o ysgolion	Maximum Uchafswm	Upper Quartile Chwartel Uchaf	Median Canolrif	Lower Quartile Chwartel Isaf	Minimum Isafswm	Minimum Isafswm			
English	208	36	50	14	0	0	0	0	Saesneg		
Welsh First Language	205	35	50	11	0	0	0	0	Cymraeg Iaith Gyntaf		
Mathematics	207	35	50	8	0	0	0	0	Mathemateg		
Science	207	35	50	9	0	0	0	0	Gwyddoniaeth		
Core Subject Indicator	207	35	50	12	0	0	0	0	Pangosydd Pynciau Craidd		

WELSH MEDIUM SCHOOLS: Schools with over 32 per cent and up to 40 per cent eligible for FSM				YSGOLION CYMRAEG: Ysgolion â mwy na 32 y cant a hyd at 40 y cant yn gymwys i gael							
	Number of Pupils Nifer y Disgyblion	Number of schools Nifer o ysgolion	Maximum Uchafswm	Upper Quartile Chwartel Uchaf	Median Canolrif	Lower Quartile Chwartel Isaf	Minimum Isafswm	Minimum Isafswm			
English	30	8	29	0	0	0	0	0	Saesneg		
Welsh First Language	30	8	50	4	0	0	0	0	Cymraeg Iaith Gyntaf		
Mathematics	30	8	25	4	0	0	0	0	Mathemateg		
Science	30	8	14	0	0	0	0	0	Gwyddoniaeth		
Core Subject Indicator	30	8	25	4	0	0	0	0	Pangosydd Pynciau Craidd		

WELSH MEDIUM SCHOOLS: Schools with over 40 per cent eligible for FSM				YSGOLION CYMRAEG: Ysgolion â mwy na 40 y cant yn gymwys i gael PYD							
	Number of Pupils Nifer y Disgyblion	Number of schools Nifer o ysgolion	Maximum Uchafswm	Upper Quartile Chwartel Uchaf	Median Canolrif	Lower Quartile Chwartel Isaf	Minimum Isafswm	Minimum Isafswm			
English	21	5	50	9	0	0	0	0	Saesneg		
Welsh First Language	16	3	50	42	33	21	9	9	Cymraeg Iaith Gyntaf		
Mathematics	21	5	50	18	0	0	0	0	Mathemateg		
Science	21	5	50	9	0	0	0	0	Gwyddoniaeth		
Core Subject Indicator	21	5	50	18	0	0	0	0	Pangosydd Pynciau Craidd		

ALL WELSH MEDIUM PRIMARY SCHOOLS				POB YSGOL GYMRADD CYMRAEG							
	Number of Pupils Nifer y Disgyblion	Number of schools Nifer o ysgolion	Maximum Uchafswm	Upper Quartile Chwartel Uchaf	Median Canolrif	Lower Quartile Chwartel Isaf	Minimum Isafswm	Minimum Isafswm			
English	2,719	381	60	9	0	0	0	0	Saesneg		
Welsh First Language	2,677	373	57	9	0	0	0	0	Cymraeg Iaith Gyntaf		
Mathematics	2,717	379	67	9	0	0	0	0	Mathemateg		
Science	2,719	381	50	0	0	0	0	0	Gwyddoniaeth		
Core Subject Indicator	2,717	379	67	11	0	0	0	0	Pangosydd Pynciau Craidd		

Key Stage 2, Welsh Medium Schools, 2014, No Welsh Spoken At Home
For pupils not eligible for free school meals only

Cyfnod Allweddol 2, Ysgolion Cymraeg, 2014, Ddim yn Siarad Cymraeg yn y Cartref
Disgyblion nad sy'n gymwys am Prydau Ysgolion am Ddim yn unig.

Mae'r holl gwarteli wedi'u seilio ar y canran o ddisgyblion sy'n cyrraedd yn is na'r lefel disgywliedig (<Lefel 4)

All benchmarks are based on the percentage of pupils achieving less than the expected level (<Level 4)

WELSH MEDIUM SCHOOLS: Schools with up to 8 per cent eligible for FSM				YSGOLION CYMRAEG: Ysgolion â hyd at 8 y cant yn gymwys i gael PVD							
	Number of Pupils Nifer y Disgyblion	Number of schools Nifer o ysgolion	Maximum Uchafswm	Upper Quartile Chwartel Uchaf	Median Canolrif	Lower Quartile Chwartel Isaf	Minimum Isafswm				
English	927	123	67	6	0	0	0	Saesneg			
Welsh First Language	868	120	67	14	0	0	0	Cymraeg Iaith Gyntaf			
Mathematics	927	123	67	9	0	0	0	Mathemateg			
Science	928	124	67	5	0	0	0	Gwyddoniaeth			
Core Subject Indicator	926	122	67	13	0	0	0	Bangosydd Pynciau Craidd			

WELSH MEDIUM SCHOOLS: Schools with over 8 per cent and up to 16 per cent eligible for FSM				YSGOLION CYMRAEG: Ysgolion â mwy na 8 y cant a hyd at 16 y cant yn gymwys i gael							
	Number of Pupils Nifer y Disgyblion	Number of schools Nifer o ysgolion	Maximum Uchafswm	Upper Quartile Chwartel Uchaf	Median Canolrif	Lower Quartile Chwartel Isaf	Minimum Isafswm				
English	1,188	127	50	9	0	0	0	Saesneg			
Welsh First Language	1,063	122	67	16	0	0	0	Cymraeg Iaith Gyntaf			
Mathematics	1,187	126	50	11	0	0	0	Mathemateg			
Science	1,188	127	50	7	0	0	0	Gwyddoniaeth			
Core Subject Indicator	1,187	126	50	13	3	0	0	Bangosydd Pynciau Craidd			

WELSH MEDIUM SCHOOLS: Schools with over 16 per cent and up to 24 per cent eligible for FSM				YSGOLION CYMRAEG: Ysgolion â mwy na 16 y cant a hyd at 24 y cant yn gymwys i gael							
	Number of Pupils Nifer y Disgyblion	Number of schools Nifer o ysgolion	Maximum Uchafswm	Upper Quartile Chwartel Uchaf	Median Canolrif	Lower Quartile Chwartel Isaf	Minimum Isafswm				
English	615	66	50	18	5	0	0	Saesneg			
Welsh First Language	582	64	50	23	7	0	0	Cymraeg Iaith Gyntaf			
Mathematics	615	66	50	15	0	0	0	Mathemateg			
Science	615	66	50	10	0	0	0	Gwyddoniaeth			
Core Subject Indicator	615	66	50	20	7	0	0	Bangosydd Pynciau Craidd			

WELSH MEDIUM SCHOOLS: Schools with over 24 per cent and up to 32 per cent eligible for FSM				YSGOLION CYMRAEG: Ysgolion â mwy na 24 y cant a hyd at 32 y cant yn gymwys i gael							
	Number of Pupils Nifer y Disgyblion	Number of schools Nifer o ysgolion	Maximum Uchafswm	Upper Quartile Chwartel Uchaf	Median Canolrif	Lower Quartile Chwartel Isaf	Minimum Isafswm				
English	326	41	33	13	0	0	0	Saesneg			
Welsh First Language	305	40	50	20	8	0	0	Cymraeg Iaith Gyntaf			
Mathematics	326	41	50	14	0	0	0	Mathemateg			
Science	326	41	50	5	0	0	0	Gwyddoniaeth			
Core Subject Indicator	326	41	50	17	0	0	0	Bangosydd Pynciau Craidd			

WELSH MEDIUM SCHOOLS: Schools with over 32 per cent and up to 40 per cent eligible for FSM				YSGOLION CYMRAEG: Ysgolion â mwy na 32 y cant a hyd at 40 y cant yn gymwys i gael							
	Number of Pupils Nifer y Disgyblion	Number of schools Nifer o ysgolion	Maximum Uchafswm	Upper Quartile Chwartel Uchaf	Median Canolrif	Lower Quartile Chwartel Isaf	Minimum Isafswm				
English	26	9	50	25	0	0	0	Saesneg			
Welsh First Language	23	8	50	10	0	0	0	Cymraeg Iaith Gyntaf			
Mathematics	26	9	33	0	0	0	0	Mathemateg			
Science	26	9	33	0	0	0	0	Gwyddoniaeth			
Core Subject Indicator	26	9	33	0	0	0	0	Bangosydd Pynciau Craidd			

WELSH MEDIUM SCHOOLS: Schools with over 40 per cent eligible for FSM				YSGOLION CYMRAEG: Ysgolion â mwy na 40 y cant yn gymwys i gael PVD							
	Number of Pupils Nifer y Disgyblion	Number of schools Nifer o ysgolion	Maximum Uchafswm	Upper Quartile Chwartel Uchaf	Median Canolrif	Lower Quartile Chwartel Isaf	Minimum Isafswm				
English	54	8	25	17	12	0	0	Saesneg			
Welsh First Language	33	5	36	18	17	0	0	Cymraeg Iaith Gyntaf			
Mathematics	54	8	25	17	15	0	0	Mathemateg			
Science	54	8	25	17	15	0	0	Gwyddoniaeth			
Core Subject Indicator	54	8	25	17	15	0	0	Bangosydd Pynciau Craidd			

ALL WELSH MEDIUM PRIMARY SCHOOLS				POB YSGOL GYNRADD CYMRAEG							
	Number of Pupils Nifer y Disgyblion	Number of schools Nifer o ysgolion	Maximum Uchafswm	Upper Quartile Chwartel Uchaf	Median Canolrif	Lower Quartile Chwartel Isaf	Minimum Isafswm				
English	3,136	374	67	10	0	0	0	Saesneg			
Welsh First Language	2,874	359	67	18	0	0	0	Cymraeg Iaith Gyntaf			
Mathematics	3,135	373	67	11	0	0	0	Mathemateg			
Science	3,137	375	67	7	0	0	0	Gwyddoniaeth			
Core Subject Indicator	3,134	372	67	15	0	0	0	Bangosydd Pynciau Craidd			

Key Stage 2, English Medium Schools, 2014

For pupils not eligible for free school meals only

Cyfnod Allweddol 2, Ysgolion Saesneg, 2014

Disgyblion nad sy'n gymwys am Prydau Ysgolion am Ddim yn unig.
Mae'r holl gwartel wedi'u seilio ar y canran o ddisgyblion sy'n cyrraedd yn is na'r lefel
disgwyliedig (<Level 4)

All benchmarks are based on the percentage of pupils achieving less than the expected level (<Level 4)

ENGLISH MEDIUM SCHOOLS: Schools with up to 8 per cent eligible for FSM												YSGOLION SAESNEG: Ysgolion â hyd at 8 y cant yn gymwys i gael PYD											
	Number of Pupils Nifer y Disgyblion		Number of schools Nifer o ysgolion		Maximum Uchafswm		Upper Quartile Chwartel Uchaf		Median Canolrif		Lower Quartile Chwartel Isaf		Minimum Isafswm										
English	4,370		167		33		7		3		0		0	Saesneg									
Mathematics	4,370		167		33		7		3		0		0	Mathemateg									
Science	4,370		167		33		5		0		0		0	Gwyddoniaeth									
Core Subject Indicator	4,370		167		33		9		5		0		0	0 pangosydd Pynciau Craidd									

ENGLISH MEDIUM SCHOOLS: Schools with over 8 per cent and less than 16 per cent eligible for FSM												YSGOLION SAESNEG: Ysgolion â mwy na 8 y cant a hyd at 16 y cant yn gymwys i gael											
	Number of Pupils Nifer y Disgyblion		Number of schools Nifer o ysgolion		Maximum Uchafswm		Upper Quartile Chwartel Uchaf		Median Canolrif		Lower Quartile Chwartel Isaf		Minimum Isafswm										
English	4,641		190		50		9		4		0		0	Saesneg									
Mathematics	4,641		190		50		9		4		0		0	Mathemateg									
Science	4,641		190		50		7		3		0		0	Gwyddoniaeth									
Core Subject Indicator	4,641		190		50		12		6		0		0	0 pangosydd Pynciau Craidd									

ENGLISH MEDIUM SCHOOLS: Schools with over 16 per cent and less than 24 per cent eligible for FSM												YSGOLION SAESNEG: Ysgolion â mwy na 16 y cant a hyd at 24 y cant yn gymwys i gael											
	Number of Pupils Nifer y Disgyblion		Number of schools Nifer o ysgolion		Maximum Uchafswm		Upper Quartile Chwartel Uchaf		Median Canolrif		Lower Quartile Chwartel Isaf		Minimum Isafswm										
English	3,576		145		44		11		7		0		0	Saesneg									
Mathematics	3,576		145		33		11		7		0		0	Mathemateg									
Science	3,576		145		44		9		4		0		0	Gwyddoniaeth									
Core Subject Indicator	3,576		145		44		13		9		4		0	0 pangosydd Pynciau Craidd									

ENGLISH MEDIUM SCHOOLS: Schools with over 24 per cent and less than 32 per cent eligible for FSM												YSGOLION SAESNEG: Ysgolion â mwy na 24 y cant a hyd at 32 y cant yn gymwys i gael											
	Number of Pupils Nifer y Disgyblion		Number of schools Nifer o ysgolion		Maximum Uchafswm		Upper Quartile Chwartel Uchaf		Median Canolrif		Lower Quartile Chwartel Isaf		Minimum Isafswm										
English	3,193		143		50		16		10		5		0	Saesneg									
Mathematics	3,193		143		50		15		10		5		0	Mathemateg									
Science	3,193		143		39		14		8		4		0	Gwyddoniaeth									
Core Subject Indicator	3,193		143		50		19		13		6		0	0 pangosydd Pynciau Craidd									

ENGLISH MEDIUM SCHOOLS: Schools with over 32 per cent and less than 40 per cent eligible for FSM												YSGOLION SAESNEG: Ysgolion â mwy na 32 y cant a hyd at 40 y cant yn gymwys i gael											
	Number of Pupils Nifer y Disgyblion		Number of schools Nifer o ysgolion		Maximum Uchafswm		Upper Quartile Chwartel Uchaf		Median Canolrif		Lower Quartile Chwartel Isaf		Minimum Isafswm										
English	1,880		93		40		15		10		6		0	Saesneg									
Mathematics	1,880		93		40		16		9		5		0	Mathemateg									
Science	1,880		93		40		14		8		3		0	Gwyddoniaeth									
Core Subject Indicator	1,880		93		40		19		12		8		0	0 pangosydd Pynciau Craidd									

ENGLISH MEDIUM SCHOOLS: Schools with over 40 per cent eligible for FSM												YSGOLION SAESNEG: Ysgolion â mwy na 40 y cant yn gymwys i gael PYD											
	Number of Pupils Nifer y Disgyblion		Number of schools Nifer o ysgolion		Maximum Uchafswm		Upper Quartile Chwartel Uchaf		Median Canolrif		Lower Quartile Chwartel Isaf		Minimum Isafswm										
English	1,532		119		67		25		15		6		0	Saesneg									
Mathematics	1,532		119		67		25		13		0		0	Mathemateg									
Science	1,532		119		67		23		13		0		0	Gwyddoniaeth									
Core Subject Indicator	1,532		119		67		29		20		8		0	0 pangosydd Pynciau Craidd									

ALL ENGLISH MEDIUM PRIMARY SCHOOLS												POB YSGOL GYNRADD SAESNEG											
	Number of Pupils Nifer y Disgyblion		Number of schools Nifer o ysgolion		Maximum Uchafswm		Upper Quartile Chwartel Uchaf		Median Canolrif		Lower Quartile Chwartel Isaf		Minimum Isafswm										
English	19,192		857		67		13		1		0		0	Saesneg									
Mathematics	19,192		857		67		13		7		0		0	Mathemateg									
Science	19,192		857		67		11		5		0		0	Gwyddoniaeth									
Core Subject Indicator	19,192		857		67		17		9		3		0	0 pangosydd Pynciau Craidd									

Key Stage 2: SUMMARY TABLES, 2014

Cyfnod Allweddol 2: TABLAU CRYNODEB, 2014

These tables show the average performance by subject, and by FSM band for pupils not eligible for free school meals only.

Mae'r tablau yma'n dangos y perfformiad cyfartalog yn ôl pwnc, ac yn ôl grŵp PYD, am disgyblion nad sy'n gymwys am prydau ysgolion am ddim yn unig.

	FSM Band/ Band PYD						ALL WELSH MEDIUM SCHOOLS POB YSGOL GYNRADD GYMRAEG	
	up to 8%	over 8% and less than 16%	over 16% and less than 24%	over 24% and less than 32%	over 32% and less than 40%	over 40%		
	hyd at 8%	mwy na 8% a hyd at 16%	mwy na 16% a hyd at 24%	mwy na 24% a hyd at 32%	mwy na 32% a hyd at 40%	mwy na 40%		
English	6	7	7	10	7	10	7	Saesneg
Welsh First Language	6	7	7	9	7	19	7	Cymraeg Iaith Gyntaf
Mathematics	6	6	6	8	7	14	6	Mathemateg
Science	4	5	5	8	3	10	5	Gwyddoniaeth
Core Subject Indicator	8	8	8	10	7	14	8	Dangosydd Pynciau Craidd

	FSM Band/ Band PYD						ALL WELSH MEDIUM SCHOOLS POB YSGOL GYNRADD GYMRAEG	
	up to 8%	over 8% and less than 16%	over 16% and less than 24%	over 24% and less than 32%	over 32% and less than 40%	over 40%		
	hyd at 8%	mwy na 8% a hyd at 16%	mwy na 16% a hyd at 24%	mwy na 24% a hyd at 32%	mwy na 32% a hyd at 40%	mwy na 40%		
English	6	7	9	8	12	13	7	Saesneg
Welsh First Language	9	10	12	12	17	24	10	Cymraeg Iaith Gyntaf
Mathematics	7	7	8	8	8	15	7	Mathemateg
Science	5	5	7	6	8	15	6	Gwyddoniaeth
Core Subject Indicator	8	10	11	10	8	15	10	Dangosydd Pynciau Craidd

	FSM Band/ Band PYD						ALL ENGLISH MEDIUM SCHOOLS POB YSGOL GYNRADD SAESNEG	
	up to 8%	over 8% and less than 16%	over 16% and less than 24%	over 24% and less than 32%	over 32% and less than 40%	over 40%		
	hyd at 8%	mwy na 8% a hyd at 16%	mwy na 16% a hyd at 24%	mwy na 24% a hyd at 32%	mwy na 32% a hyd at 40%	mwy na 40%		
English	4	6	8	11	12	17	8	Saesneg
Mathematics	4	6	7	10	12	15	8	Mathemateg
Science	3	5	6	9	10	14	7	Gwyddoniaeth
Core Subject Indicator	6	8	10	13	14	19	10	Dangosydd Pynciau Craidd

Key Stage 2, Welsh Medium Schools, 2014, Speak Welsh at Home
For pupils not eligible for free school meals only

Cyfnod Allweddol 2, Ysgolion Cymraeg, 2014 - Siarad Cymraeg yn y Cartref
Disgyblion nad sy'n gymwys am Prydau Ysgolion am Ddim yn unig.
Mae'r holl gwarteli wedi'u seilio ar y canran o ddisgyblion sy'n cyrraedd y lefel disgywlydiedig (Lefel 4+)

All benchmarks are based on the percentage of pupils achieving the expected level or above (Level 4+)

WELSH MEDIUM SCHOOLS: Schools with up to 8 per cent eligible for FSM				YSGOLION CYMRAEG: Ysgolion â hyd at 8 y cant yn gymwys i gael PYD							
	Number of Pupils Nifer y Disgyblion	Number of schools Nifer o ysgolion	Minimum Isafswm	Lower Quartile Chwartel Isaf	Median Canolrif	Upper Quartile Chwartel Uchaf	Maximum Uchafswm				
English	1,202	134	40	91	100	100	100				Saesneg
Welsh First Language	1,200	134	50	91	100	100	100				Cymraeg Iaith Gyntaf
Mathematics	1,202	134	50	90	100	100	100				Mathemateg
Science	1,203	135	50	99	100	100	100				Gwyddoniaeth
Core Subject Indicator	1,202	134	50	88	100	100	100				Bangosydd Pynciau Craidd

WELSH MEDIUM SCHOOLS: Schools with over 8 per cent and up to 16 per cent eligible for FSM				YSGOLION CYMRAEG: Ysgolion â mwy na 8 y cant a hyd at 16 y cant yn gymwys i gael							
	Number of Pupils Nifer y Disgyblion	Number of schools Nifer o ysgolion	Minimum Isafswm	Lower Quartile Chwartel Isaf	Median Canolrif	Upper Quartile Chwartel Uchaf	Maximum Uchafswm				
English	830	129	50	90	100	100	100				Saesneg
Welsh First Language	809	126	43	91	100	100	100				Cymraeg Iaith Gyntaf
Mathematics	829	128	50	90	100	100	100				Mathemateg
Science	830	129	50	100	100	100	100				Gwyddoniaeth
Core Subject Indicator	829	128	50	89	100	100	100				Bangosydd Pynciau Craidd

WELSH MEDIUM SCHOOLS: Schools with over 16 per cent and up to 24 per cent eligible for FSM				YSGOLION CYMRAEG: Ysgolion â mwy na 16 y cant a hyd at 24 y cant yn gymwys i gael							
	Number of Pupils Nifer y Disgyblion	Number of schools Nifer o ysgolion	Minimum Isafswm	Lower Quartile Chwartel Isaf	Median Canolrif	Upper Quartile Chwartel Uchaf	Maximum Uchafswm				
English	428	69	67	100	100	100	100				Saesneg
Welsh First Language	417	67	67	90	100	100	100				Cymraeg Iaith Gyntaf
Mathematics	428	69	33	93	100	100	100				Mathemateg
Science	428	69	67	100	100	100	100				Gwyddoniaeth
Core Subject Indicator	428	69	33	92	100	100	100				Bangosydd Pynciau Craidd

WELSH MEDIUM SCHOOLS: Schools with over 24 per cent and up to 32 per cent eligible for FSM				YSGOLION CYMRAEG: Ysgolion â mwy na 24 y cant a hyd at 32 y cant yn gymwys i gael							
	Number of Pupils Nifer y Disgyblion	Number of schools Nifer o ysgolion	Minimum Isafswm	Lower Quartile Chwartel Isaf	Median Canolrif	Upper Quartile Chwartel Uchaf	Maximum Uchafswm				
English	208	36	50	86	100	100	100				Saesneg
Welsh First Language	205	35	50	89	100	100	100				Cymraeg Iaith Gyntaf
Mathematics	207	35	50	92	100	100	100				Mathemateg
Science	207	35	50	91	100	100	100				Gwyddoniaeth
Core Subject Indicator	207	35	50	88	100	100	100				Bangosydd Pynciau Craidd

WELSH MEDIUM SCHOOLS: Schools with over 32 per cent and up to 40 per cent eligible for FSM				YSGOLION CYMRAEG: Ysgolion â mwy na 32 y cant a hyd at 40 y cant yn gymwys i gael							
	Number of Pupils Nifer y Disgyblion	Number of schools Nifer o ysgolion	Minimum Isafswm	Lower Quartile Chwartel Isaf	Median Canolrif	Upper Quartile Chwartel Uchaf	Maximum Uchafswm				
English	30	8	71	100	100	100	100				Saesneg
Welsh First Language	30	8	50	96	100	100	100				Cymraeg Iaith Gyntaf
Mathematics	30	8	75	96	100	100	100				Mathemateg
Science	30	8	86	100	100	100	100				Gwyddoniaeth
Core Subject Indicator	30	8	75	96	100	100	100				Bangosydd Pynciau Craidd

WELSH MEDIUM SCHOOLS: Schools with over 40 per cent eligible for FSM				YSGOLION CYMRAEG: Ysgolion â mwy na 40 y cant yn gymwys i gael PYD							
	Number of Pupils Nifer y Disgyblion	Number of schools Nifer o ysgolion	Minimum Isafswm	Lower Quartile Chwartel Isaf	Median Canolrif	Upper Quartile Chwartel Uchaf	Maximum Uchafswm				
English	21	5	50	91	100	100	100				Saesneg
Welsh First Language	16	3	50	58	67	79	91				Cymraeg Iaith Gyntaf
Mathematics	21	5	50	82	100	100	100				Mathemateg
Science	21	5	50	91	100	100	100				Gwyddoniaeth
Core Subject Indicator	21	5	50	82	100	100	100				Bangosydd Pynciau Craidd

ALL WELSH MEDIUM PRIMARY SCHOOLS				POB YSGOL GYMRADD CYMRAEG							
	Number of Pupils Nifer y Disgyblion	Number of schools Nifer o ysgolion	Minimum Isafswm	Lower Quartile Chwartel Isaf	Median Canolrif	Upper Quartile Chwartel Uchaf	Maximum Uchafswm				
English	2,719	381	40	91	100	100	100				Saesneg
Welsh First Language	2,677	373	43	91	100	100	100				Cymraeg Iaith Gyntaf
Mathematics	2,717	379	33	91	100	100	100				Mathemateg
Science	2,719	381	50	100	100	100	100				Gwyddoniaeth
Core Subject Indicator	2,717	379	33	89	100	100	100				Bangosydd Pynciau Craidd

Key Stage 2, Welsh Medium Schools, 2014, No Welsh Spoken At Home
For pupils not eligible for free school meals only

Cynnod Allweddol 2, Ysgolion Cymraeg, 2014, ddim yn Siarad Cymraeg yn y Cartref
Disgyblion nad sy'n gymwys am Prydau Ysgolion am Ddim yn unig.

All benchmarks are based on the percentage of pupils achieving the expected level or above (Level 4+)

Mae'r holl gwarteli wedi'u seilio ar y canran o ddisgyblion sy'n cyrraedd y lefel disgwyliedig (Lefel 4+)

WELSH MEDIUM SCHOOLS: Schools with up to 8 per cent eligible for FSM				YSGOLION CYMRAEG: Ysgolion â hyd at 8 y cant yn gymwys i gael PVD							
	Number of Pupils Nifer y Disgyblion	Number of schools Nifer o ysgolion	Minimum Isafswm	Lower Quartile Chwartel Isaf	Median Canolrif	Upper Quartile Chwartel Uchaf	Maximum Uchafswm				
English	927	123	33	94	100	100	100				Saesneg
Welsh First Language	868	120	33	86	100	100	100				Cymraeg Iaith Gyntaf
Mathematics	927	123	33	91	100	100	100				Mathemateg
Science	928	124	33	95	100	100	100				Gwyddoniaeth
Core Subject Indicator	926	122	33	88	100	100	100				Bangosydd Pynciau Craidd

WELSH MEDIUM SCHOOLS: Schools with over 8 per cent and up to 16 per cent eligible for FSM				YSGOLION CYMRAEG: Ysgolion â mwy na 8 y cant a hyd at 16 y cant yn gymwys i gael							
	Number of Pupils Nifer y Disgyblion	Number of schools Nifer o ysgolion	Minimum Isafswm	Lower Quartile Chwartel Isaf	Median Canolrif	Upper Quartile Chwartel Uchaf	Maximum Uchafswm				
English	1,188	127	50	91	100	100	100				Saesneg
Welsh First Language	1,063	122	33	84	100	100	100				Cymraeg Iaith Gyntaf
Mathematics	1,187	126	50	89	100	100	100				Mathemateg
Science	1,188	127	50	93	100	100	100				Gwyddoniaeth
Core Subject Indicator	1,187	126	50	87	97	100	100				Bangosydd Pynciau Craidd

WELSH MEDIUM SCHOOLS: Schools with over 16 per cent and up to 24 per cent eligible for FSM				YSGOLION CYMRAEG: Ysgolion â mwy na 16 y cant a hyd at 24 y cant yn gymwys i gael							
	Number of Pupils Nifer y Disgyblion	Number of schools Nifer o ysgolion	Minimum Isafswm	Lower Quartile Chwartel Isaf	Median Canolrif	Upper Quartile Chwartel Uchaf	Maximum Uchafswm				
English	615	66	50	82	95	100	100				Saesneg
Welsh First Language	582	64	50	77	93	100	100				Cymraeg Iaith Gyntaf
Mathematics	615	66	50	85	100	100	100				Mathemateg
Science	615	66	50	90	100	100	100				Gwyddoniaeth
Core Subject Indicator	615	66	50	80	93	100	100				Bangosydd Pynciau Craidd

WELSH MEDIUM SCHOOLS: Schools with over 24 per cent and up to 32 per cent eligible for FSM				YSGOLION CYMRAEG: Ysgolion â mwy na 24 y cant a hyd at 32 y cant yn gymwys i gael							
	Number of Pupils Nifer y Disgyblion	Number of schools Nifer o ysgolion	Minimum Isafswm	Lower Quartile Chwartel Isaf	Median Canolrif	Upper Quartile Chwartel Uchaf	Maximum Uchafswm				
English	326	41	67	88	100	100	100				Saesneg
Welsh First Language	305	40	50	80	93	100	100				Cymraeg Iaith Gyntaf
Mathematics	326	41	50	86	100	100	100				Mathemateg
Science	326	41	50	95	100	100	100				Gwyddoniaeth
Core Subject Indicator	326	41	50	83	100	100	100				Bangosydd Pynciau Craidd

WELSH MEDIUM SCHOOLS: Schools with over 32 per cent and up to 40 per cent eligible for FSM				YSGOLION CYMRAEG: Ysgolion â mwy na 32 y cant a hyd at 40 y cant yn gymwys i gael							
	Number of Pupils Nifer y Disgyblion	Number of schools Nifer o ysgolion	Minimum Isafswm	Lower Quartile Chwartel Isaf	Median Canolrif	Upper Quartile Chwartel Uchaf	Maximum Uchafswm				
English	26	9	50	75	100	100	100				Saesneg
Welsh First Language	23	8	50	90	100	100	100				Cymraeg Iaith Gyntaf
Mathematics	26	9	67	100	100	100	100				Mathemateg
Science	26	9	67	100	100	100	100				Gwyddoniaeth
Core Subject Indicator	26	9	67	100	100	100	100				Bangosydd Pynciau Craidd

WELSH MEDIUM SCHOOLS: Schools with over 40 per cent eligible for FSM				YSGOLION CYMRAEG: Ysgolion â mwy na 40 y cant yn gymwys i gael PVD							
	Number of Pupils Nifer y Disgyblion	Number of schools Nifer o ysgolion	Minimum Isafswm	Lower Quartile Chwartel Isaf	Median Canolrif	Upper Quartile Chwartel Uchaf	Maximum Uchafswm				
English	54	8	75	83	88	100	100				Saesneg
Welsh First Language	33	5	64	82	83	100	100				Cymraeg Iaith Gyntaf
Mathematics	54	8	75	83	85	100	100				Mathemateg
Science	54	8	75	83	85	100	100				Gwyddoniaeth
Core Subject Indicator	54	8	75	83	85	100	100				Bangosydd Pynciau Craidd

ALL WELSH MEDIUM PRIMARY SCHOOLS				POB YSGOL GYNRADD CYMRAEG							
	Number of Pupils Nifer y Disgyblion	Number of schools Nifer o ysgolion	Minimum Isafswm	Lower Quartile Chwartel Isaf	Median Canolrif	Upper Quartile Chwartel Uchaf	Maximum Uchafswm				
English	3,136	374	33	90	100	100	100				Saesneg
Welsh First Language	2,874	359	33	82	100	100	100				Cymraeg Iaith Gyntaf
Mathematics	3,135	373	33	89	100	100	100				Mathemateg
Science	3,137	375	33	93	100	100	100				Gwyddoniaeth
Core Subject Indicator	3,134	372	33	85	100	100	100				Bangosydd Pynciau Craidd

Key Stage 2, English Medium Schools, 2014

For pupils not eligible for free school meals only

Cyfnod Allweddol 2, Ysgolion Saesneg, 2014

Disgyblion nad sy'n gymwys am Prydau Ysgolion am Ddim yn unig.
Mae'r holl gwarteli wedi'u seilio ar y canran o ddisgyblion sy'n cyrraedd y lefel disgywleddig (Lefel 4+)

All benchmarks are based on the percentage of pupils achieving the expected level or above (Level 4+)

ENGLISH MEDIUM SCHOOLS: Schools with up to 8 per cent eligible for FSM												YSGOLION SAESNEG: Ysgolion â hyd at 8 y cant yn gymwys i gael PYD											
	Number of Pupils Nifer y Disgyblion		Number of schools Nifer o ysgolion		Minimum Isafswm		Lower Quartile Chwartel Isaf		Median Canolrif		Upper Quartile Chwartel Uchaf		Maximum Uchafswm										
English	4,370		167		67		93		97		100		100	Saesneg									
Mathematics	4,370		167		75		93		97		100		100	Mathemateg									
Science	4,370		167		33		95		100		100		100	Gwyddoniaeth									
Core Subject Indicator	4,370		167		33		91		95		100		100	bangosydd Pynciau Craidd									

ENGLISH MEDIUM SCHOOLS: Schools with over 8 per cent and less than 16 per cent eligible for FSM												YSGOLION SAESNEG: Ysgolion â mwy na 8 y cant a hyd at 16 y cant yn gymwys i gael											
	Number of Pupils Nifer y Disgyblion		Number of schools Nifer o ysgolion		Minimum Isafswm		Lower Quartile Chwartel Isaf		Median Canolrif		Upper Quartile Chwartel Uchaf		Maximum Uchafswm										
English	4,641		190		50		91		96		100		100	Saesneg									
Mathematics	4,641		190		50		91		96		100		100	Mathemateg									
Science	4,641		190		50		93		97		100		100	Gwyddoniaeth									
Core Subject Indicator	4,641		190		50		88		94		100		100	bangosydd Pynciau Craidd									

ENGLISH MEDIUM SCHOOLS: Schools with over 16 per cent and less than 24 per cent eligible for FSM												YSGOLION SAESNEG: Ysgolion â mwy na 16 y cant a hyd at 24 y cant yn gymwys i gael											
	Number of Pupils Nifer y Disgyblion		Number of schools Nifer o ysgolion		Minimum Isafswm		Lower Quartile Chwartel Isaf		Median Canolrif		Upper Quartile Chwartel Uchaf		Maximum Uchafswm										
English	3,576		145		56		89		93		100		100	Saesneg									
Mathematics	3,576		145		67		89		93		100		100	Mathemateg									
Science	3,576		145		56		91		96		100		100	Gwyddoniaeth									
Core Subject Indicator	3,576		145		56		87		91		96		100	bangosydd Pynciau Craidd									

ENGLISH MEDIUM SCHOOLS: Schools with over 24 per cent and less than 32 per cent eligible for FSM												YSGOLION SAESNEG: Ysgolion â mwy na 24 y cant a hyd at 32 y cant yn gymwys i gael											
	Number of Pupils Nifer y Disgyblion		Number of schools Nifer o ysgolion		Minimum Isafswm		Lower Quartile Chwartel Isaf		Median Canolrif		Upper Quartile Chwartel Uchaf		Maximum Uchafswm										
English	3,193		143		50		84		90		95		100	Saesneg									
Mathematics	3,193		143		50		85		90		95		100	Mathemateg									
Science	3,193		143		61		86		92		96		100	Gwyddoniaeth									
Core Subject Indicator	3,193		143		50		81		88		94		100	bangosydd Pynciau Craidd									

ENGLISH MEDIUM SCHOOLS: Schools with over 32 per cent and less than 40 per cent eligible for FSM												YSGOLION SAESNEG: Ysgolion â mwy na 32 y cant a hyd at 40 y cant yn gymwys i gael											
	Number of Pupils Nifer y Disgyblion		Number of schools Nifer o ysgolion		Minimum Isafswm		Lower Quartile Chwartel Isaf		Median Canolrif		Upper Quartile Chwartel Uchaf		Maximum Uchafswm										
English	1,880		93		60		85		90		94		100	Saesneg									
Mathematics	1,880		93		60		84		91		95		100	Mathemateg									
Science	1,880		93		60		86		92		97		100	Gwyddoniaeth									
Core Subject Indicator	1,880		93		60		81		88		92		100	bangosydd Pynciau Craidd									

ENGLISH MEDIUM SCHOOLS: Schools with over 40 per cent eligible for FSM												YSGOLION SAESNEG: Ysgolion â mwy na 40 y cant yn gymwys i gael PYD											
	Number of Pupils Nifer y Disgyblion		Number of schools Nifer o ysgolion		Minimum Isafswm		Lower Quartile Chwartel Isaf		Median Canolrif		Upper Quartile Chwartel Uchaf		Maximum Uchafswm										
English	1,532		119		33		75		85		94		100	Saesneg									
Mathematics	1,532		119		33		75		88		100		100	Mathemateg									
Science	1,532		119		33		77		88		100		100	Gwyddoniaeth									
Core Subject Indicator	1,532		119		33		71		80		92		100	bangosydd Pynciau Craidd									

ALL ENGLISH MEDIUM PRIMARY SCHOOLS												POB YSGOL GYNRADD SAESNEG											
	Number of Pupils Nifer y Disgyblion		Number of schools Nifer o ysgolion		Minimum Isafswm		Lower Quartile Chwartel Isaf		Median Canolrif		Upper Quartile Chwartel Uchaf		Maximum Uchafswm										
English	19,192		857		33		87		93		100		100	Saesneg									
Mathematics	19,192		857		33		88		93		100		100	Mathemateg									
Science	19,192		857		33		89		95		100		100	Gwyddoniaeth									
Core Subject Indicator	19,192		857		33		83		91		97		100	bangosydd Pynciau Craidd									

Key Stage 2: SUMMARY TABLES, 2014

Cyfnod Allweddol 2: TABLAU CRYNODEB, 2014

These tables show the average performance by subject, and by FSM band for pupils not eligible for free school meals only.

Mae'r tablau yma'n dangos y perfformiad cyfartalog yn ôl pwnc, ac yn ôl grŵp PYD, am disgyblion nad sy'n gymwys am prydau ysgolion am ddim yn unig.

WELSH MEDIUM SCHOOLS - Welsh Spoken At Home

YSGOLION CYMRAEG - Siarad Cymraeg yn y Cartref

	FSM Band/ Band PYD						ALL WELSH MEDIUM SCHOOLS POB YSGOL GYNRADD CYMRAEG	
	up to 8% hyd at 8%	over 8% and less than 16% mwy na 8% a hyd at 16%	over 16% and less than 24% mwy na 16% a hyd at 24%	over 24% and less than 32% mwy na 24% a hyd at 32%	over 32% and less than 40% mwy na 32% a hyd at 40%	over 40% mwy na 40%		
English	94	93	93	90	93	90	93	Saesneg
Welsh First Language	94	93	93	91	93	81	93	Cymraeg Iaith Gyntaf
Mathematics	94	94	94	92	93	86	94	Mathemateg
Science	96	95	95	92	97	90	95	Gwyddoniaeth
Core Subject Indicator	92	92	92	90	93	86	92	Dangosydd Pynciau Craidd

WELSH MEDIUM SCHOOLS - Welsh Not Spoken At Home

YSGOLION CYMRAEG - Ddim yn Siarad Cymraeg yn y Cartref

	FSM Band/ Band PYD						ALL WELSH MEDIUM SCHOOLS POB YSGOL GYNRADD CYMRAEG	
	up to 8% hyd at 8%	over 8% and less than 16% mwy na 8% a hyd at 16%	over 16% and less than 24% mwy na 16% a hyd at 24%	over 24% and less than 32% mwy na 24% a hyd at 32%	over 32% and less than 40% mwy na 32% a hyd at 40%	over 40% mwy na 40%		
English	94	93	91	92	88	87	93	Saesneg
Welsh First Language	91	90	88	88	83	76	90	Cymraeg Iaith Gyntaf
Mathematics	93	93	92	92	92	85	93	Mathemateg
Science	95	95	93	94	92	85	94	Gwyddoniaeth
Core Subject Indicator	92	90	89	90	92	85	90	Dangosydd Pynciau Craidd

ENGLISH MEDIUM SCHOOLS

YSGOLION SAESNEG

	FSM Band/ Band PYD						ALL ENGLISH MEDIUM SCHOOLS POB YSGOL GYNRADD SAESNEG	
	up to 8% hyd at 8%	over 8% and less than 16% mwy na 8% a hyd at 16%	over 16% and less than 24% mwy na 16% a hyd at 24%	over 24% and less than 32% mwy na 24% a hyd at 32%	over 32% and less than 40% mwy na 32% a hyd at 40%	over 40% mwy na 40%		
English	96	94	92	89	88	83	92	Saesneg
Mathematics	96	94	93	90	88	85	92	Mathemateg
Science	97	95	94	91	90	86	93	Gwyddoniaeth
Core Subject Indicator	94	92	90	87	86	81	90	Dangosydd Pynciau Craidd

Key Stage 2, Welsh Medium Schools, 2014, Speak Welsh at Home
For pupils not eligible for free school meals only

Cyfnod Allweddol 2, Ysgolion Cymraeg, 2014, Siarad Cymraeg yn y Cartref
Disgyblion nad sy'n gymwys am Prydau Ysgolion am Ddim yn unig.
Mae'r holl gwarteli wedi'u seilio ar y canran o ddisgyblion sy'n cyrraedd lefel 5 neu uwch (Lefel 5+)

All benchmarks are based on the percentage of pupils achieving the level 5 or above (Level 5+)

WELSH MEDIUM SCHOOLS: Schools with up to 8 per cent eligible for FSM				YSGOLION CYMRAEG: Ysgolion â hyd at 8 y cant yn gymwys i gael PYD							
	Number of Pupils Nifer y Disgyblion	Number of schools Nifer o ysgolion	Minimum Isafswm	Lower Quartile Chwartel Isaf	Median Canolrif	Upper Quartile Chwartel Uchaf	Maximum Uchafswm				
English	1,204	136	0	20	42	55	100	Saesneg			
Welsh First Language	1,202	136	0	30	50	60	100	Cymraeg Iaith Gyntaf			
Mathematics	1,204	136	0	24	45	58	100	Mathemateg			
Science	1,204	136	0	22	44	60	100	Gwyddoniaeth			
Core Subject Indicator	0	0	Bangosydd Pynciau Craidd			

WELSH MEDIUM SCHOOLS: Schools with over 8 per cent and up to 16 per cent eligible for FSM				YSGOLION CYMRAEG: Ysgolion â mwy na 8 y cant a hyd at 16 y cant yn gymwys i gael							
	Number of Pupils Nifer y Disgyblion	Number of schools Nifer o ysgolion	Minimum Isafswm	Lower Quartile Chwartel Isaf	Median Canolrif	Upper Quartile Chwartel Uchaf	Maximum Uchafswm				
English	831	130	0	29	44	54	100	Saesneg			
Welsh First Language	810	127	0	33	50	67	100	Cymraeg Iaith Gyntaf			
Mathematics	831	130	0	31	50	67	100	Mathemateg			
Science	831	130	0	27	50	68	100	Gwyddoniaeth			
Core Subject Indicator	0	0	Bangosydd Pynciau Craidd			

WELSH MEDIUM SCHOOLS: Schools with over 16 per cent and up to 24 per cent eligible for FSM				YSGOLION CYMRAEG: Ysgolion â mwy na 16 y cant a hyd at 24 y cant yn gymwys i gael							
	Number of Pupils Nifer y Disgyblion	Number of schools Nifer o ysgolion	Minimum Isafswm	Lower Quartile Chwartel Isaf	Median Canolrif	Upper Quartile Chwartel Uchaf	Maximum Uchafswm				
English	428	69	0	22	43	67	100	Saesneg			
Welsh First Language	418	68	0	17	41	67	100	Cymraeg Iaith Gyntaf			
Mathematics	428	69	0	26	43	67	100	Mathemateg			
Science	428	69	0	25	43	67	100	Gwyddoniaeth			
Core Subject Indicator	0	0	Bangosydd Pynciau Craidd			

WELSH MEDIUM SCHOOLS: Schools with over 24 per cent and up to 32 per cent eligible for FSM				YSGOLION CYMRAEG: Ysgolion â mwy na 24 y cant a hyd at 32 y cant yn gymwys i gael							
	Number of Pupils Nifer y Disgyblion	Number of schools Nifer o ysgolion	Minimum Isafswm	Lower Quartile Chwartel Isaf	Median Canolrif	Upper Quartile Chwartel Uchaf	Maximum Uchafswm				
English	208	36	0	13	36	50	100	Saesneg			
Welsh First Language	206	36	0	0	33	50	100	Cymraeg Iaith Gyntaf			
Mathematics	208	36	0	0	38	50	100	Mathemateg			
Science	208	36	0	0	38	50	100	Gwyddoniaeth			
Core Subject Indicator	0	0	Bangosydd Pynciau Craidd			

WELSH MEDIUM SCHOOLS: Schools with over 32 per cent and up to 40 per cent eligible for FSM				YSGOLION CYMRAEG: Ysgolion â mwy na 32 y cant a hyd at 40 y cant yn gymwys i gael							
	Number of Pupils Nifer y Disgyblion	Number of schools Nifer o ysgolion	Minimum Isafswm	Lower Quartile Chwartel Isaf	Median Canolrif	Upper Quartile Chwartel Uchaf	Maximum Uchafswm				
English	30	8	0	13	25	36	50	Saesneg			
Welsh First Language	30	8	0	0	21	29	50	Cymraeg Iaith Gyntaf			
Mathematics	30	8	0	0	8	26	50	Mathemateg			
Science	30	8	0	0	21	50	57	Gwyddoniaeth			
Core Subject Indicator	0	0	Bangosydd Pynciau Craidd			

WELSH MEDIUM SCHOOLS: Schools with over 40 per cent eligible for FSM				YSGOLION CYMRAEG: Ysgolion â mwy na 40 y cant yn gymwys i gael PYD							
	Number of Pupils Nifer y Disgyblion	Number of schools Nifer o ysgolion	Minimum Isafswm	Lower Quartile Chwartel Isaf	Median Canolrif	Upper Quartile Chwartel Uchaf	Maximum Uchafswm				
English	21	5	0	27	33	50	67	Saesneg			
Welsh First Language	16	3	0	14	27	47	67	Cymraeg Iaith Gyntaf			
Mathematics	21	5	0	27	50	67	67	Mathemateg			
Science	21	5	0	27	50	50	67	Gwyddoniaeth			
Core Subject Indicator	0	0	Bangosydd Pynciau Craidd			

ALL WELSH MEDIUM PRIMARY SCHOOLS				POB YSGOL GYMRADD CYMRAEG							
	Number of Pupils Nifer y Disgyblion	Number of schools Nifer o ysgolion	Minimum Isafswm	Lower Quartile Chwartel Isaf	Median Canolrif	Upper Quartile Chwartel Uchaf	Maximum Uchafswm				
English	2,722	384	0	20	42	55	100	Saesneg			
Welsh First Language	2,682	378	0	25	45	63	100	Cymraeg Iaith Gyntaf			
Mathematics	2,722	384	0	25	46	62	100	Mathemateg			
Science	2,722	384	0	22	47	67	100	Gwyddoniaeth			
Core Subject Indicator	0	0	Bangosydd Pynciau Craidd			

Key Stage 2, Welsh Medium Schools, 2014, No Welsh Spoken At Home
For pupils not eligible for free school meals only

Cynnod Allweddol 2, Ysgolion Cymraeg, 2014, ddim yn Siarad Cymraeg yn y Cartref
Disgyblion nad sy'n gymwys am Prydau Ysgolion am Ddim yn unig.

All benchmarks are based on the percentage of pupils achieving the level 5 or above (Level 5+)

Mae'r holl gwarteli wedi'u seilio ar y canran o ddisgyblion sy'n cyrraedd lefel 5 neu uwch (Lefel 5+)

WELSH MEDIUM SCHOOLS: Schools with up to 8 per cent eligible for FSM				YSGOLION CYMRAEG: Ysgolion â hyd at 8 y cant yn gymwys i gael PVD							
	Number of Pupils Nifer y Disgyblion	Number of schools Nifer o ysgolion	Minimum Isafswm	Lower Quartile Chwartel Isaf	Median Canolrif	Upper Quartile Chwartel Uchaf	Maximum Uchafswm				
English	929	125	0	25	44	67	100				Saesneg
Welsh First Language	872	124	0	0	27	50	100				Cymraeg Iaith Gyntaf
Mathematics	929	125	0	25	42	50	100				Mathemateg
Science	929	125	0	0	43	56	100				Gwyddoniaeth
Core Subject Indicator	0	0	hangosydd Pynciau Craidd

WELSH MEDIUM SCHOOLS: Schools with over 8 per cent and up to 16 per cent eligible for FSM				YSGOLION CYMRAEG: Ysgolion â mwy na 8 y cant a hyd at 16 y cant yn gymwys i gael							
	Number of Pupils Nifer y Disgyblion	Number of schools Nifer o ysgolion	Minimum Isafswm	Lower Quartile Chwartel Isaf	Median Canolrif	Upper Quartile Chwartel Uchaf	Maximum Uchafswm				
English	1,189	128	0	25	40	50	100				Saesneg
Welsh First Language	1,064	123	0	0	25	40	100				Cymraeg Iaith Gyntaf
Mathematics	1,189	128	0	25	35	50	100				Mathemateg
Science	1,189	128	0	20	35	50	100				Gwyddoniaeth
Core Subject Indicator	0	0	hangosydd Pynciau Craidd

WELSH MEDIUM SCHOOLS: Schools with over 16 per cent and up to 24 per cent eligible for FSM				YSGOLION CYMRAEG: Ysgolion â mwy na 16 y cant a hyd at 24 y cant yn gymwys i gael							
	Number of Pupils Nifer y Disgyblion	Number of schools Nifer o ysgolion	Minimum Isafswm	Lower Quartile Chwartel Isaf	Median Canolrif	Upper Quartile Chwartel Uchaf	Maximum Uchafswm				
English	619	70	0	24	37	53	100				Saesneg
Welsh First Language	590	69	0	0	27	50	100				Cymraeg Iaith Gyntaf
Mathematics	619	70	0	20	33	50	100				Mathemateg
Science	619	70	0	2	33	49	100				Gwyddoniaeth
Core Subject Indicator	0	0	hangosydd Pynciau Craidd

WELSH MEDIUM SCHOOLS: Schools with over 24 per cent and up to 32 per cent eligible for FSM				YSGOLION CYMRAEG: Ysgolion â mwy na 24 y cant a hyd at 32 y cant yn gymwys i gael							
	Number of Pupils Nifer y Disgyblion	Number of schools Nifer o ysgolion	Minimum Isafswm	Lower Quartile Chwartel Isaf	Median Canolrif	Upper Quartile Chwartel Uchaf	Maximum Uchafswm				
English	326	41	0	8	30	50	100				Saesneg
Welsh First Language	305	40	0	0	17	30	60				Cymraeg Iaith Gyntaf
Mathematics	326	41	0	8	33	50	100				Mathemateg
Science	326	41	0	0	31	50	100				Gwyddoniaeth
Core Subject Indicator	0	0	hangosydd Pynciau Craidd

WELSH MEDIUM SCHOOLS: Schools with over 32 per cent and up to 40 per cent eligible for FSM				YSGOLION CYMRAEG: Ysgolion â mwy na 32 y cant a hyd at 40 y cant yn gymwys i gael							
	Number of Pupils Nifer y Disgyblion	Number of schools Nifer o ysgolion	Minimum Isafswm	Lower Quartile Chwartel Isaf	Median Canolrif	Upper Quartile Chwartel Uchaf	Maximum Uchafswm				
English	26	9	0	33	50	67	100				Saesneg
Welsh First Language	26	9	0	0	0	60	100				Cymraeg Iaith Gyntaf
Mathematics	26	9	0	33	50	60	100				Mathemateg
Science	26	9	0	33	50	60	100				Gwyddoniaeth
Core Subject Indicator	0	0	hangosydd Pynciau Craidd

WELSH MEDIUM SCHOOLS: Schools with over 40 per cent eligible for FSM				YSGOLION CYMRAEG: Ysgolion â mwy na 40 y cant yn gymwys i gael PVD							
	Number of Pupils Nifer y Disgyblion	Number of schools Nifer o ysgolion	Minimum Isafswm	Lower Quartile Chwartel Isaf	Median Canolrif	Upper Quartile Chwartel Uchaf	Maximum Uchafswm				
English	54	8	0	5	25	39	57				Saesneg
Welsh First Language	33	5	0	0	0	18	33				Cymraeg Iaith Gyntaf
Mathematics	54	8	0	0	33	37	71				Mathemateg
Science	54	8	0	0	25	37	71				Gwyddoniaeth
Core Subject Indicator	0	0	hangosydd Pynciau Craidd

ALL WELSH MEDIUM PRIMARY SCHOOLS				POB YSGOL GYNRADD CYMRAEG							
	Number of Pupils Nifer y Disgyblion	Number of schools Nifer o ysgolion	Minimum Isafswm	Lower Quartile Chwartel Isaf	Median Canolrif	Upper Quartile Chwartel Uchaf	Maximum Uchafswm				
English	3,143	381	0	20	40	52	100				Saesneg
Welsh First Language	2,890	370	0	0	25	43	100				Cymraeg Iaith Gyntaf
Mathematics	3,143	381	0	20	37	50	100				Mathemateg
Science	3,143	381	0	13	38	50	100				Gwyddoniaeth
Core Subject Indicator	0	0	hangosydd Pynciau Craidd

Key Stage 2, English Medium Schools, 2014

For pupils not eligible for free school meals only

Cyfnod Allweddol 2, Ysgolion Saesneg, 2014

Disgyblion nad sy'n gymwys am Prydau Ysgolion am Ddim yn unig.
Mae'r holl gwartel wedi'u seilio ar y canran o ddisgyblion sy'n cyrraedd lefel 5 neu uwch (Lefel 5+)

All benchmarks are based on the percentage of pupils achieving the level 5 above (Level 5+)

ENGLISH MEDIUM SCHOOLS: Schools with up to 8 per cent eligible for FSM												YSGOLION SAESNEG: Ysgolion â hyd at 8 y cant yn gymwys i gael PYD											
	Number of Pupils Nifer y Disgyblion		Number of schools Nifer o ysgolion		Minimum Isafswm		Lower Quartile Chwartel Isaf		Median Canolrif		Upper Quartile Chwartel Uchaf		Maximum Uchafswm										
English	4,370		167		17		43		54		62		83	Saesneg									
Mathematics	4,370		167		0		42		53		59		76	Mathemateg									
Science	4,370		167		0		45		53		61		100	Gwyddoniaeth									
Core Subject Indicator	0		0		Bangosydd Pynciau Craidd									

ENGLISH MEDIUM SCHOOLS: Schools with over 8 per cent and less than 16 per cent eligible for FSM												YSGOLION SAESNEG: Ysgolion â mwy na 8 y cant a hyd at 16 y cant yn gymwys i gael											
	Number of Pupils Nifer y Disgyblion		Number of schools Nifer o ysgolion		Minimum Isafswm		Lower Quartile Chwartel Isaf		Median Canolrif		Upper Quartile Chwartel Uchaf		Maximum Uchafswm										
English	4,641		190		0		39		45		54		100	Saesneg									
Mathematics	4,641		190		0		36		45		52		100	Mathemateg									
Science	4,641		190		0		36		46		56		83	Gwyddoniaeth									
Core Subject Indicator	0		0		Bangosydd Pynciau Craidd									

ENGLISH MEDIUM SCHOOLS: Schools with over 16 per cent and less than 24 per cent eligible for FSM												YSGOLION SAESNEG: Ysgolion â mwy na 16 y cant a hyd at 24 y cant yn gymwys i gael											
	Number of Pupils Nifer y Disgyblion		Number of schools Nifer o ysgolion		Minimum Isafswm		Lower Quartile Chwartel Isaf		Median Canolrif		Upper Quartile Chwartel Uchaf		Maximum Uchafswm										
English	3,576		145		0		30		39		47		100	Saesneg									
Mathematics	3,576		145		0		33		39		46		100	Mathemateg									
Science	3,576		145		0		29		39		50		80	Gwyddoniaeth									
Core Subject Indicator	0		0		Bangosydd Pynciau Craidd									

ENGLISH MEDIUM SCHOOLS: Schools with over 24 per cent and less than 32 per cent eligible for FSM												YSGOLION SAESNEG: Ysgolion â mwy na 24 y cant a hyd at 32 y cant yn gymwys i gael											
	Number of Pupils Nifer y Disgyblion		Number of schools Nifer o ysgolion		Minimum Isafswm		Lower Quartile Chwartel Isaf		Median Canolrif		Upper Quartile Chwartel Uchaf		Maximum Uchafswm										
English	3,193		143		0		28		38		48		86	Saesneg									
Mathematics	3,193		143		6		29		38		47		86	Mathemateg									
Science	3,193		143		0		28		38		48		86	Gwyddoniaeth									
Core Subject Indicator	0		0		Bangosydd Pynciau Craidd									

ENGLISH MEDIUM SCHOOLS: Schools with over 32 per cent and less than 40 per cent eligible for FSM												YSGOLION SAESNEG: Ysgolion â mwy na 32 y cant a hyd at 40 y cant yn gymwys i gael											
	Number of Pupils Nifer y Disgyblion		Number of schools Nifer o ysgolion		Minimum Isafswm		Lower Quartile Chwartel Isaf		Median Canolrif		Upper Quartile Chwartel Uchaf		Maximum Uchafswm										
English	1,880		93		0		29		38		46		100	Saesneg									
Mathematics	1,880		93		0		28		36		45		100	Mathemateg									
Science	1,880		93		0		27		33		47		70	Gwyddoniaeth									
Core Subject Indicator	0		0		Bangosydd Pynciau Craidd									

ENGLISH MEDIUM SCHOOLS: Schools with over 40 per cent eligible for FSM												YSGOLION SAESNEG: Ysgolion â mwy na 40 y cant yn gymwys i gael PYD											
	Number of Pupils Nifer y Disgyblion		Number of schools Nifer o ysgolion		Minimum Isafswm		Lower Quartile Chwartel Isaf		Median Canolrif		Upper Quartile Chwartel Uchaf		Maximum Uchafswm										
English	1,532		119		0		22		33		50		100	Saesneg									
Mathematics	1,532		119		0		22		36		49		100	Mathemateg									
Science	1,532		119		0		22		32		46		100	Gwyddoniaeth									
Core Subject Indicator	0		0		Bangosydd Pynciau Craidd									

ALL ENGLISH MEDIUM PRIMARY SCHOOLS												POB YSGOL GYNRADD SAESNEG											
	Number of Pupils Nifer y Disgyblion		Number of schools Nifer o ysgolion		Minimum Isafswm		Lower Quartile Chwartel Isaf		Median Canolrif		Upper Quartile Chwartel Uchaf		Maximum Uchafswm										
English	19,192		857		0		31		42		52		100	Saesneg									
Mathematics	19,192		857		0		32		42		50		100	Mathemateg									
Science	19,192		857		0		30		43		53		100	Gwyddoniaeth									
Core Subject Indicator	0		0		Bangosydd Pynciau Craidd									

Key Stage 2: SUMMARY TABLES, 2014

These tables show the average performance by subject, and by FSM band for pupils not eligible for free school meals only.

Cyfnod Allweddol 2: TABLAU CRYNODEB, 2014

Mae'r tablau yma'n dangos y perfformiad cyfartalog yn ôl pwnc, ac yn ôl grŵp PYD, am disgyblion nad sy'n gymwys am prydau ysgolion am ddim yn unig.

WELSH MEDIUM SCHOOLS - Welsh Spoken At Home

YSGOLION CYMRAEG - siarad Cymraeg yn y Cartref

	FSM Band/ Band PYD						ALL WELSH MEDIUM SCHOOLS POB YSGOL GYNRADD CYMRAEG	
	up to 8%	over 8% and less than 16%	over 16% and less than 24%	over 24% and less than 32%	over 32% and less than 40%	over 40%		
	hyd at 8%	mwy na 8% a hyd at 16%	mwy na 16% a hyd at 24%	mwy na 24% a hyd at 32%	mwy na 32% a hyd at 40%	mwy na 40%		
English	44	43	41	36	27	33	42	Saesneg
Welsh First Language	48	47	40	36	23	31	45	Cymraeg Iaith Gyntaf
Mathematics	45	47	41	39	17	38	44	Mathemateg
Science	45	46	41	39	27	33	44	Gwyddoniaeth
Core Subject Indicator	Dangosydd Pynciau Craidd

WELSH MEDIUM SCHOOLS - Welsh Not Spoken At Home

YSGOLION CYMRAEG - Ddim yn Siarad Cymraeg yn y Cartref

	FSM Band/ Band PYD						ALL WELSH MEDIUM SCHOOLS POB YSGOL GYNRADD CYMRAEG	
	up to 8%	over 8% and less than 16%	over 16% and less than 24%	over 24% and less than 32%	over 32% and less than 40%	over 40%		
	hyd at 8%	mwy na 8% a hyd at 16%	mwy na 16% a hyd at 24%	mwy na 24% a hyd at 32%	mwy na 32% a hyd at 40%	mwy na 40%		
English	44	39	40	31	42	30	40	Saesneg
Welsh First Language	34	27	34	21	27	12	30	Cymraeg Iaith Gyntaf
Mathematics	43	40	37	32	35	30	39	Mathemateg
Science	43	38	37	30	35	28	38	Gwyddoniaeth
Core Subject Indicator	Dangosydd Pynciau Craidd

ENGLISH MEDIUM SCHOOLS

YSGOLION SAESNEG

	FSM Band/ Band PYD						ALL ENGLISH MEDIUM SCHOOLS POB YSGOL GYNRADD SAESNEG	
	up to 8%	over 8% and less than 16%	over 16% and less than 24%	over 24% and less than 32%	over 32% and less than 40%	over 40%		
	hyd at 8%	mwy na 8% a hyd at 16%	mwy na 16% a hyd at 24%	mwy na 24% a hyd at 32%	mwy na 32% a hyd at 40%	mwy na 40%		
English	54	46	40	38	38	34	44	Saesneg
Mathematics	53	46	40	38	38	34	43	Mathemateg
Science	55	47	41	38	37	34	44	Gwyddoniaeth
Core Subject Indicator	Dangosydd Pynciau Craidd

Key Stage 2, Welsh Medium Schools, 2014

All benchmarks are based on the percentage of pupils achieving less than the expected level (Level <4)

Cyfnod Allweddol 2, Ysgolion Cymraeg, 2014

Mae'r holl gwarteli wedi'u seilio ar y canran o ddisgyblion sy'n cyrraedd yn is na'r lefel disgwylidig (Lefel <4)

WELSH MEDIUM SCHOOLS: Schools with up to 8 per cent eligible for FSM				YSGOLION CYMRAEG: Ysgolion â hyd at 8 y cant yn gymwys i gael PYD						
	Number of Pupils Nifer y Disgyblion	Number of schools Nifer o ysgolion	Maximum Uchafswm	Upper Quartile Chwartel Uchaf	Median Canolrif	Lower Quartile Chwartel Isaf	Minimum Isafswm			
English	2,308	144	100	11	3	0	0	Saesneg		
Welsh First Language	2,188	141	67	13	7	0	0	Cymraeg Iaith Gyntaf		
Mathematics	2,308	79	50	17	10	0	0	Mathemateg		
Science	2,308	42	60	23	13	6	0	Gwyddoniaeth		
Core Subject Indicator	2,308	11	43	26	14	0	0	Dangosydd Pynciau Craidd		

WELSH MEDIUM SCHOOLS: Schools with over 8 per cent and up to 16 per cent eligible for FSM				YSGOLION CYMRAEG: Ysgolion â mwy na 8 y cant a hyd at 16 y cant yn gymwys i gael PYD						
	Number of Pupils Nifer y Disgyblion	Number of schools Nifer o ysgolion	Maximum Uchafswm	Upper Quartile Chwartel Uchaf	Median Canolrif	Lower Quartile Chwartel Isaf	Minimum Isafswm			
English	2,450	8	33	23	17	11	6	Saesneg		
Welsh First Language	2,126	144	100	14	6	0	0	Cymraeg Iaith Gyntaf		
Mathematics	2,450	137	67	17	10	0	0	Mathemateg		
Science	2,450	78	83	22	13	0	0	Gwyddoniaeth		
Core Subject Indicator	2,450	41	67	25	18	10	0	Dangosydd Pynciau Craidd		

WELSH MEDIUM SCHOOLS: Schools with over 16 per cent and up to 24 per cent eligible for FSM				YSGOLION CYMRAEG: Ysgolion â mwy na 16 y cant a hyd at 24 y cant yn gymwys i gael PYD						
	Number of Pupils Nifer y Disgyblion	Number of schools Nifer o ysgolion	Maximum Uchafswm	Upper Quartile Chwartel Uchaf	Median Canolrif	Lower Quartile Chwartel Isaf	Minimum Isafswm			
English	1,380	11	75	40	22	13	0	Saesneg		
Welsh First Language	1,238	5	41	33	25	23	7	Cymraeg Iaith Gyntaf		
Mathematics	1,380	144	100	13	6	0	0	Mathemateg		
Science	1,380	141	67	13	6	0	0	Gwyddoniaeth		
Core Subject Indicator	1,380	79	50	16	8	0	0	Dangosydd Pynciau Craidd		

WELSH MEDIUM SCHOOLS: Schools with over 24 per cent and up to 32 per cent eligible for FSM				YSGOLION CYMRAEG: Ysgolion â mwy na 24 y cant a hyd at 32 y cant yn gymwys i gael PYD						
	Number of Pupils Nifer y Disgyblion	Number of schools Nifer o ysgolion	Maximum Uchafswm	Upper Quartile Chwartel Uchaf	Median Canolrif	Lower Quartile Chwartel Isaf	Minimum Isafswm			
English	775	42	67	19	10	4	0	Saesneg		
Welsh First Language	683	11	43	24	14	0	0	Cymraeg Iaith Gyntaf		
Mathematics	775	8	33	20	15	12	11	Mathemateg		
Science	775	144	100	7	0	0	0	Gwyddoniaeth		
Core Subject Indicator	775	141	67	11	4	0	0	Dangosydd Pynciau Craidd		

WELSH MEDIUM SCHOOLS: Schools with over 32 per cent and up to 40 per cent eligible for FSM				YSGOLION CYMRAEG: Ysgolion â mwy na 32 y cant a hyd at 40 y cant yn gymwys i gael PYD						
	Number of Pupils Nifer y Disgyblion	Number of schools Nifer o ysgolion	Maximum Uchafswm	Upper Quartile Chwartel Uchaf	Median Canolrif	Lower Quartile Chwartel Isaf	Minimum Isafswm			
English	81	79	50	14	8	0	0	Saesneg		
Welsh First Language	81	42	67	18	8	0	0	Cymraeg Iaith Gyntaf		
Mathematics	81	11	43	20	14	0	0	Mathemateg		
Science	81	8	33	20	13	10	7	Gwyddoniaeth		
Core Subject Indicator	81	144	100	16	7	0	0	Dangosydd Pynciau Craidd		

WELSH MEDIUM SCHOOLS: Schools with over 40 per cent eligible for FSM				YSGOLION CYMRAEG: Ysgolion â mwy na 40 y cant yn gymwys i gael PYD						
	Number of Pupils Nifer y Disgyblion	Number of schools Nifer o ysgolion	Maximum Uchafswm	Upper Quartile Chwartel Uchaf	Median Canolrif	Lower Quartile Chwartel Isaf	Minimum Isafswm			
English	166	141	67	16	8	0	0	Saesneg		
Welsh First Language	78	79	50	18	11	0	0	Cymraeg Iaith Gyntaf		
Mathematics	166	42	67	25	14	8	0	Mathemateg		
Science	166	11	43	24	18	5	0	Gwyddoniaeth		
Core Subject Indicator	166	8	33	23	17	12	11	Dangosydd Pynciau Craidd		

ALL WELSH MEDIUM PRIMARY SCHOOLS				POB YSGOL GYNRADD CYMRAEG						
	Number of Pupils Nifer y Disgyblion	Number of schools Nifer o ysgolion	Maximum Uchafswm	Upper Quartile Chwartel Uchaf	Median Canolrif	Lower Quartile Chwartel Isaf	Minimum Isafswm			
English	7,160	425	100	15	7	0	0	Saesneg		
Welsh First Language	6,394	416	100	20	10	0	0	Cymraeg Iaith Gyntaf		
Mathematics	7,160	425	100	15	7	0	0	Mathemateg		
Science	7,160	425	100	12	4	0	0	Gwyddoniaeth		
Core Subject Indicator	7,160	425	100	18	10	0	0	Dangosydd Pynciau Craidd		

Key Stage 2, English Medium Schools, 2014

All benchmarks are based on the percentage of pupils achieving less than the expected level (Level <4)

Cyfnod Allweddol 2, Ysgolion Saesneg, 2014

Mae'r holl gwarteli wedi'u seilio ar y canran o ddisgyblion sy'n cyrraedd yn is na'r lefel disgwyliedig (Lefel <4)

ENGLISH MEDIUM SCHOOLS: Schools with up to 8 per cent eligible for FSM											YSGOLION SAESNEG: Ysgolion â hyd at 8 y cant yn gymwys i gael PYD										
	Number of Pupils Nifer y Disgyblion	Number of schools Nifer o ysgolion		Maximum Uchafswm		Upper Quartile Chwartel Uchaf		Median Canolrif		Lower Quartile Chwartel Isaf		Minimum Isafswm									
English	4,602	167		33		8		3		0		0		Saesneg							
Mathematics	4,602	190		43		10		6		2		0		Mathemateg							
Science	4,602	145		50		13		9		5		0		Gwyddoniaeth							
Core Subject Indicator	4,602	143		43		17		14		9		0		Dangosydd Pynciau Craidd							

ENGLISH MEDIUM SCHOOLS: Schools with over 8 per cent and less than 16 per cent eligible for FSM											YSGOLION SAESNEG: Ysgolion â mwy na 8 y cant a hyd at 16 y cant yn gymwys i gael PYD										
	Number of Pupils Nifer y Disgyblion	Number of schools Nifer o ysgolion		Maximum Uchafswm		Upper Quartile Chwartel Uchaf		Median Canolrif		Lower Quartile Chwartel Isaf		Minimum Isafswm									
English	5,252	93		44		19		14		10		0		Saesneg							
Mathematics	5,252	119		67		29		20		13		0		Mathemateg							
Science	5,252	167		33		8		4		0		0		Gwyddoniaeth							
Core Subject Indicator	5,252	190		43		11		6		0		0		Dangosydd Pynciau Craidd							

ENGLISH MEDIUM SCHOOLS: Schools with over 16 per cent and less than 24 per cent eligible for FSM											YSGOLION SAESNEG: Ysgolion â mwy na 16 y cant a hyd at 24 y cant yn gymwys i gael PYD										
	Number of Pupils Nifer y Disgyblion	Number of schools Nifer o ysgolion		Minimum Isafswm		Upper Quartile Chwartel Uchaf		Median Canolrif		Lower Quartile Chwartel Isaf		Maximum Uchafswm									
English	4,413	145		45		13		8		5		0		Saesneg							
Mathematics	4,413	143		43		17		13		9		0		Mathemateg							
Science	4,413	93		41		18		14		11		0		Gwyddoniaeth							
Core Subject Indicator	4,413	119		67		26		19		11		0		Dangosydd Pynciau Craidd							

ENGLISH MEDIUM SCHOOLS: Schools with over 24 per cent and less than 32 per cent eligible for FSM											YSGOLION SAESNEG: Ysgolion â mwy na 24 y cant a hyd at 32 y cant yn gymwys i gael PYD										
	Number of Pupils Nifer y Disgyblion	Number of schools Nifer o ysgolion		Maximum Uchafswm		Upper Quartile Chwartel Uchaf		Median Canolrif		Lower Quartile Chwartel Isaf		Minimum Isafswm									
English	4,274	167		33		6		1		0		0		Saesneg							
Mathematics	4,274	190		43		8		5		0		0		Mathemateg							
Science	4,274	145		50		10		7		3		0		Gwyddoniaeth							
Core Subject Indicator	4,274	143		38		16		11		7		0		Dangosydd Pynciau Craidd							

ENGLISH MEDIUM SCHOOLS: Schools with over 32 per cent and less than 40 per cent eligible for FSM											YSGOLION SAESNEG: Ysgolion â mwy na 32 y cant a hyd at 40 y cant yn gymwys i gael PYD										
	Number of Pupils Nifer y Disgyblion	Number of schools Nifer o ysgolion		Maximum Uchafswm		Upper Quartile Chwartel Uchaf		Median Canolrif		Lower Quartile Chwartel Isaf		Minimum Isafswm									
English	2,774	93		40		17		13		7		0		Saesneg							
Mathematics	2,774	119		67		25		17		10		0		Mathemateg							
Science	2,774	167		33		10		6		2		0		Gwyddoniaeth							
Core Subject Indicator	2,774	190		43		13		8		3		0		Dangosydd Pynciau Craidd							

ENGLISH MEDIUM SCHOOLS: Schools with over 40 per cent eligible for FSM											YSGOLION SAESNEG: Ysgolion â mwy na 40 y cant yn gymwys i gael PYD										
	Number of Pupils Nifer y Disgyblion	Number of schools Nifer o ysgolion		Maximum Uchafswm		Upper Quartile Chwartel Uchaf		Median Canolrif		Lower Quartile Chwartel Isaf		Minimum Isafswm									
English	2,948	145		50		16		11		7		0		Saesneg							
Mathematics	2,948	143		43		20		16		11		0		Mathemateg							
Science	2,948	93		52		22		17		13		0		Gwyddoniaeth							
Core Subject Indicator	2,948	119		67		33		23		17		0		Dangosydd Pynciau Craidd							

ALL ENGLISH MEDIUM PRIMARY SCHOOLS											POB YSGOL GYNRADD SAESNEG										
	Number of Pupils Nifer y Disgyblion	Number of schools Nifer o ysgolion		Maximum Uchafswm		Upper Quartile Chwartel Uchaf		Median Canolrif		Lower Quartile Chwartel Isaf		Minimum Isafswm									
English	24,263	857		67		17		10		4		0		Saesneg							
Mathematics	24,263	857		67		15		9		4		0		Mathemateg							
Science	24,263	857		67		14		7		2		0		Gwyddoniaeth							
Core Subject Indicator	24,263	857		67		19		12		6		0		Dangosydd Pynciau Craidd							

Key Stage 2: SUMMARY TABLES, 2014

Cyfnod Allweddol 2: TABLAU CRYNODEB, 2014

These tables show the average performance by subject, and by FSM band Mae'r tablau yma'n dangos y perfformiad cyfartalog yn ôl pwnc, ac yn ôl grŵp PYD.

WELSH MEDIUM SCHOOLS

YSGOLION CYMRAEG

	FSM Band/ Band PYD						ALL WELSH MEDIUM SCHOOLS POB YSGOL GYNRADD GYMRAEG	
	up to 8% hyd at 8%	over 8% and less than 16% mwy na 8% a hyd at 16%	over 16% and less than 24% mwy na 16% a hyd at 24%	over 24% and less than 32% mwy na 24% a hyd at 32%	over 32% and less than 40% mwy na 32% a hyd at 40%	over 40% mwy na 40%		
English	6	8	11	13	16	17	9	Saesneg
Welsh First Language	9	11	14	17	27	22	12	Cymraeg Iaith Gyntaf
Mathematics	7	8	10	12	15	16	9	Mathemateg
Science	5	6	9	11	14	14	7	Gwyddoniaeth
Core Subject Indicator	9	11	13	15	16	17	11	Dangosydd Pynciau Craidd

ENGLISH MEDIUM SCHOOLS

YSGOLION SAESNEG

	FSM Band/ Band PYD						ALL WELSH MEDIUM SCHOOLS POB YSGOL GYNRADD GYMRAEG	
	up to 8% hyd at 8%	over 8% and less than 16% mwy na 8% a hyd at 16%	over 16% and less than 24% mwy na 16% a hyd at 24%	over 24% and less than 32% mwy na 24% a hyd at 32%	over 32% and less than 40% mwy na 32% a hyd at 40%	over 40% mwy na 40%		
English	5	7	10	13	16	22	11	Saesneg
Mathematics	5	7	9	12	15	20	11	Mathemateg
Science	3	6	8	11	13	18	9	Gwyddoniaeth
Core Subject Indicator	6	9	12	16	19	26	13	Dangosydd Pynciau Craidd

Key Stage 2, Welsh Medium Schools, 2014

All benchmarks are based on the percentage of pupils achieving the expected level or above (Level 4+)

Cyfnod Allweddol 2, Ysgolion Cymraeg, 2014

Mae'r holl gwarteli wedi'u seilio ar y canran o ddisgyblion sy'n cyrraedd y lefel disgwyliedig (Lefel 4+)

WELSH MEDIUM SCHOOLS: Schools with up to 8 per cent eligible for FSM			YSGOLION CYMRAEG: Ysgolion â hyd at 8 y cant yn gymwys i gael PYD							
	Number of Pupils Nifer y Disgyblion	Number of schools Nifer o ysgolion	Minimum Isafswm	Lower Quartile Chwartel Isaf	Median Canolrif	Upper Quartile Chwartel Uchaf	Maximum Uchafswm			
English	2,308	144	0	89	97	100	100		Saesneg	
Welsh First Language	2,188	144	0	86	94	100	100		Cymraeg Iaith Gyntaf	
Mathematics	2,308	144	0	88	94	100	100		Mathemateg	
Science	2,308	144	0	93	100	100	100		Gwyddoniaeth	
Core Subject Indicator	2,308	144	0	84	93	100	100		Dangosydd Pynciau Craidd	

WELSH MEDIUM SCHOOLS: Schools with over 8 per cent and up to 16 per cent eligible for FSM			YSGOLION CYMRAEG: Ysgolion â mwy na 8 y cant a hyd at 16 y cant yn gymwys i gael PYD							
	Number of Pupils Nifer y Disgyblion	Number of schools Nifer o ysgolion	Minimum Isafswm	Lower Quartile Chwartel Isaf	Median Canolrif	Upper Quartile Chwartel Uchaf	Maximum Uchafswm			
English	2,450	141	33	88	93	100	100		Saesneg	
Welsh First Language	2,126	137	33	83	90	100	100		Cymraeg Iaith Gyntaf	
Mathematics	2,450	141	33	87	94	100	100		Mathemateg	
Science	2,450	141	33	89	96	100	100		Gwyddoniaeth	
Core Subject Indicator	2,450	141	33	84	92	100	100		Dangosydd Pynciau Craidd	

WELSH MEDIUM SCHOOLS: Schools with over 16 per cent and up to 24 per cent eligible for FSM			YSGOLION CYMRAEG: Ysgolion â mwy na 16 y cant a hyd at 24 y cant yn gymwys i gael PYD							
	Number of Pupils Nifer y Disgyblion	Number of schools Nifer o ysgolion	Minimum Isafswm	Lower Quartile Chwartel Isaf	Median Canolrif	Upper Quartile Chwartel Uchaf	Maximum Uchafswm			
English	1,380	79	50	83	90	100	100		Saesneg	
Welsh First Language	1,238	78	17	78	87	100	100		Cymraeg Iaith Gyntaf	
Mathematics	1,380	79	50	84	92	100	100		Mathemateg	
Science	1,380	79	50	86	92	100	100		Gwyddoniaeth	
Core Subject Indicator	1,380	79	50	82	89	100	100		Dangosydd Pynciau Craidd	

WELSH MEDIUM SCHOOLS: Schools with over 24 per cent and up to 32 per cent eligible for FSM			YSGOLION CYMRAEG: Ysgolion â mwy na 24 y cant a hyd at 32 y cant yn gymwys i gael PYD							
	Number of Pupils Nifer y Disgyblion	Number of schools Nifer o ysgolion	Minimum Isafswm	Lower Quartile Chwartel Isaf	Median Canolrif	Upper Quartile Chwartel Uchaf	Maximum Uchafswm			
English	775	42	40	77	87	94	100		Saesneg	
Welsh First Language	683	41	33	75	82	90	100		Cymraeg Iaith Gyntaf	
Mathematics	775	42	33	81	90	96	100		Mathemateg	
Science	775	42	33	82	92	100	100		Gwyddoniaeth	
Core Subject Indicator	775	42	33	75	86	92	100		Dangosydd Pynciau Craidd	

WELSH MEDIUM SCHOOLS: Schools with over 32 per cent and up to 40 per cent eligible for FSM			YSGOLION CYMRAEG: Ysgolion â mwy na 32 y cant a hyd at 40 y cant yn gymwys i gael PYD							
	Number of Pupils Nifer y Disgyblion	Number of schools Nifer o ysgolion	Minimum Isafswm	Lower Quartile Chwartel Isaf	Median Canolrif	Upper Quartile Chwartel Uchaf	Maximum Uchafswm			
English	81	11	57	74	86	100	100		Saesneg	
Welsh First Language	81	11	25	60	78	87	100		Cymraeg Iaith Gyntaf	
Mathematics	81	11	57	76	86	100	100		Mathemateg	
Science	81	11	57	80	86	100	100		Gwyddoniaeth	
Core Subject Indicator	81	11	57	76	82	95	100		Dangosydd Pynciau Craidd	

WELSH MEDIUM SCHOOLS: Schools with over 40 per cent eligible for FSM			YSGOLION CYMRAEG: Ysgolion â mwy na 40 y cant yn gymwys i gael PYD							
	Number of Pupils Nifer y Disgyblion	Number of schools Nifer o ysgolion	Minimum Isafswm	Lower Quartile Chwartel Isaf	Median Canolrif	Upper Quartile Chwartel Uchaf	Maximum Uchafswm			
English	166	8	67	77	83	89	94		Saesneg	
Welsh First Language	78	5	59	67	75	77	93		Cymraeg Iaith Gyntaf	
Mathematics	166	8	67	80	85	88	89		Mathemateg	
Science	166	8	67	80	87	90	93		Gwyddoniaeth	
Core Subject Indicator	166	8	67	77	83	88	89		Dangosydd Pynciau Craidd	

ALL WELSH MEDIUM PRIMARY SCHOOLS			POB YSGOL GYNRADD CYMRAEG							
	Number of Pupils Nifer y Disgyblion	Number of schools Nifer o ysgolion	Minimum Isafswm	Lower Quartile Chwartel Isaf	Median Canolrif	Upper Quartile Chwartel Uchaf	Maximum Uchafswm			
English	7,160	425	0	85	93	100	100		Saesneg	
Welsh First Language	6,394	416	0	80	90	100	100		Cymraeg Iaith Gyntaf	
Mathematics	7,160	425	0	85	93	100	100		Mathemateg	
Science	7,160	425	0	88	96	100	100		Gwyddoniaeth	
Core Subject Indicator	7,160	425	0	82	90	100	100		Dangosydd Pynciau Craidd	

Key Stage 2, English Medium Schools, 2014

All benchmarks are based on the percentage of pupils achieving the expected level or above (Level 4+)

Cyfnod Allweddol 2, Ysgolion Saesneg, 2014

Mae'r holl gwarteli wedi'u seilio ar y canran o ddisgyblion sy'n cyrraedd y lefel disgwyliedig (Lefel 4+)

ENGLISH MEDIUM SCHOOLS: Schools with up to 8 per cent eligible for FSM										YSGOLION SAESNEG: Ysgolion â hyd at 8 y cant yn gymwys i gael PYD										
	Number of Pupils Nifer y Disgyblion	Number of schools Nifer o ysgolion	Minimum Isafswm	Lower Quartile Chwartel Isaf	Median Canolrif	Upper Quartile Chwartel Uchaf	Maximum Uchafswm													
English	4,602	167	67	92	97	100	100													Saesneg
Mathematics	4,602	167	67	92	96	100	100													Mathemateg
Science	4,602	167	67	94	99	100	100													Gwyddoniaeth
Core Subject Indicator	4,602	167	67	90	94	98	100													Dangosydd Pynciau Craidd

ENGLISH MEDIUM SCHOOLS: Schools with over 8 per cent and less than 16 per cent eligible for FSM										YSGOLION SAESNEG: Ysgolion â mwy na 8 y cant a hyd at 16 y cant yn gymwys i gael PYD										
	Number of Pupils Nifer y Disgyblion	Number of schools Nifer o ysgolion	Minimum Isafswm	Lower Quartile Chwartel Isaf	Median Canolrif	Upper Quartile Chwartel Uchaf	Maximum Uchafswm													
English	5,252	190	57	90	94	98	100													Saesneg
Mathematics	5,252	190	57	89	94	100	100													Mathemateg
Science	5,252	190	57	92	95	100	100													Gwyddoniaeth
Core Subject Indicator	5,252	190	57	87	92	97	100													Dangosydd Pynciau Craidd

ENGLISH MEDIUM SCHOOLS: Schools with over 16 per cent and less than 24 per cent eligible for FSM										YSGOLION SAESNEG: Ysgolion â mwy na 16 y cant a hyd at 24 y cant yn gymwys i gael PYD										
	Number of Pupils Nifer y Disgyblion	Number of schools Nifer o ysgolion	Minimum Isafswm	Lower Quartile Chwartel Isaf	Median Canolrif	Upper Quartile Chwartel Uchaf	Maximum Uchafswm													
English	4,413	145	50	87	91	95	100													Saesneg
Mathematics	4,413	145	55	88	92	95	100													Mathemateg
Science	4,413	145	50	90	93	97	100													Gwyddoniaeth
Core Subject Indicator	4,413	145	50	84	89	93	100													Dangosydd Pynciau Craidd

ENGLISH MEDIUM SCHOOLS: Schools with over 24 per cent and less than 32 per cent eligible for FSM										YSGOLION SAESNEG: Ysgolion â mwy na 24 y cant a hyd at 32 y cant yn gymwys i gael PYD										
	Number of Pupils Nifer y Disgyblion	Number of schools Nifer o ysgolion	Minimum Isafswm	Lower Quartile Chwartel Isaf	Median Canolrif	Upper Quartile Chwartel Uchaf	Maximum Uchafswm													
English	4,274	143	57	83	86	91	100													Saesneg
Mathematics	4,274	143	57	83	88	91	100													Mathemateg
Science	4,274	143	63	84	89	93	100													Gwyddoniaeth
Core Subject Indicator	4,274	143	57	80	84	89	100													Dangosydd Pynciau Craidd

ENGLISH MEDIUM SCHOOLS: Schools with over 32 per cent and less than 40 per cent eligible for FSM										YSGOLION SAESNEG: Ysgolion â mwy na 32 y cant a hyd at 40 y cant yn gymwys i gael PYD										
	Number of Pupils Nifer y Disgyblion	Number of schools Nifer o ysgolion	Minimum Isafswm	Lower Quartile Chwartel Isaf	Median Canolrif	Upper Quartile Chwartel Uchaf	Maximum Uchafswm													
English	2,774	93	56	81	86	90	100													Saesneg
Mathematics	2,774	93	59	82	86	89	100													Mathemateg
Science	2,774	93	60	83	88	93	100													Gwyddoniaeth
Core Subject Indicator	2,774	93	48	78	83	87	100													Dangosydd Pynciau Craidd

ENGLISH MEDIUM SCHOOLS: Schools with over 40 per cent eligible for FSM										YSGOLION SAESNEG: Ysgolion â mwy na 40 y cant yn gymwys i gael PYD										
	Number of Pupils Nifer y Disgyblion	Number of schools Nifer o ysgolion	Minimum Isafswm	Lower Quartile Chwartel Isaf	Median Canolrif	Upper Quartile Chwartel Uchaf	Maximum Uchafswm													
English	2,948	119	33	71	80	87	100													Saesneg
Mathematics	2,948	119	33	74	81	89	100													Mathemateg
Science	2,948	119	33	75	83	90	100													Gwyddoniaeth
Core Subject Indicator	2,948	119	33	67	77	83	100													Dangosydd Pynciau Craidd

ALL ENGLISH MEDIUM PRIMARY SCHOOLS										POB YSGOL GYNRADD SAESNEG										
	Number of Pupils Nifer y Disgyblion	Number of schools Nifer o ysgolion	Minimum Isafswm	Lower Quartile Chwartel Isaf	Median Canolrif	Upper Quartile Chwartel Uchaf	Maximum Uchafswm													
English	24,263	857	33	83	90	96	100													Saesneg
Mathematics	24,263	857	33	85	91	96	100													Mathemateg
Science	24,263	857	33	86	93	98	100													Gwyddoniaeth
Core Subject Indicator	24,263	857	33	81	88	94	100													Dangosydd Pynciau Craidd

Key Stage 2: SUMMARY TABLES, 2014

Cyfnod Allweddol 2: TABLAU CRYNODEB, 2014

These tables show the average performance by subject, and by FSM band Mae'r tablau yma'n dangos y perfformiad cyfartalog yn ôl pwnc, ac yn ôl grŵp PYD.

WELSH MEDIUM SCHOOLS

YSGOLION CYMRAEG

	FSM Band/ Band PYD						ALL WELSH MEDIUM SCHOOLS POB YSGOL GYNRADD GYMRAEG	
	up to 8% hyd at 8%	over 8% and less than 16% mwy na 8% a hyd at 16%	over 16% and less than 24% mwy na 16% a hyd at 24%	over 24% and less than 32% mwy na 24% a hyd at 32%	over 32% and less than 40% mwy na 32% a hyd at 40%	over 40% mwy na 40%		
English	94	92	89	87	84	83	91	Saesneg
Welsh First Language	91	89	86	83	73	78	88	Cymraeg Iaith Gyntaf
Mathematics	93	92	90	88	85	84	91	Mathemateg
Science	95	94	91	89	86	86	93	Gwyddoniaeth
Core Subject Indicator	91	89	87	85	84	83	89	Dangosydd Pynciau Craidd

ENGLISH MEDIUM SCHOOLS

YSGOLION SAESNEG

	FSM Band/ Band PYD						ALL WELSH MEDIUM SCHOOLS POB YSGOL GYNRADD GYMRAEG	
	up to 8% hyd at 8%	over 8% and less than 16% mwy na 8% a hyd at 16%	over 16% and less than 24% mwy na 16% a hyd at 24%	over 24% and less than 32% mwy na 24% a hyd at 32%	over 32% and less than 40% mwy na 32% a hyd at 40%	over 40% mwy na 40%		
English	95	93	90	87	84	78	89	Saesneg
Mathematics	95	93	91	88	85	80	89	Mathemateg
Science	97	94	92	89	87	82	91	Gwyddoniaeth
Core Subject Indicator	94	91	88	84	81	74	87	Dangosydd Pynciau Craidd

Key Stage 2, Welsh Medium Schools, 2014

All benchmarks are based on the percentage of pupils achieving the expected level plus one or above (Level 5+)

Cyfnod Allweddol 2, Ysgolion Cymraeg, 2014

Mae'r holl gwarteli wedi'u seilio ar y canran o ddisgyblion sy'n cyrraedd y lefel disgwylidig ac un (Lefel 5+)

WELSH MEDIUM SCHOOLS: Schools with up to 8 per cent eligible				YSGOLION CYMRAEG: Ysgolion â hyd at 8 y cant yn gymwys i gael PYD				
	Number of Pupils <i>Nifer y Disgyblion</i>	Number of schools <i>Nifer o ysgolion</i>	Min	Lower Quartile <i>Chwartel Isaf</i>	Median <i>Canolrif</i>	Upper Quartile <i>Chwart el Uchaf</i>	Max	
English	2,308	144	0	27	41	50	100	Saesneg
Welsh First Language	2,188	144	0	25	39	50	100	Cymraeg Iaith Gyntaf
Mathematics	2,308	144	0	31	43	50	100	Mathemateg
Science	2,308	144	0	29	40	53	100	Gwyddoniaeth
Core Subject Indicator	.	0	Dangosydd Pynciau Craidd

WELSH MEDIUM SCHOOLS: Schools with over 8 per cent and up				YSGOLION CYMRAEG: Ysgolion â mwy na 8 y cant a hyd at 16 y cant yn				
	Number of Pupils <i>Nifer y Disgyblion</i>	Number of schools <i>Nifer o ysgolion</i>	Min	Lower Quartile <i>Chwartel Isaf</i>	Median <i>Canolrif</i>	Upper Quartile <i>Chwart el Uchaf</i>	Max	
English	2,450	141	0	29	39	50	100	Saesneg
Welsh First Language	2,126	137	0	25	33	47	100	Cymraeg Iaith Gyntaf
Mathematics	2,450	141	0	33	41	50	100	Mathemateg
Science	2,450	141	0	29	41	50	100	Gwyddoniaeth
Core Subject Indicator	.	0	Dangosydd Pynciau Craidd

WELSH MEDIUM SCHOOLS: Schools with over 16 per cent and				YSGOLION CYMRAEG: Ysgolion â mwy na 16 y cant a hyd at 24 y cant				
	Number of Pupils <i>Nifer y Disgyblion</i>	Number of schools <i>Nifer o ysgolion</i>	Min	Lower Quartile <i>Chwartel Isaf</i>	Median <i>Canolrif</i>	Upper Quartile <i>Chwart el Uchaf</i>	Max	
English	1,380	79	0	25	36	50	100	Saesneg
Welsh First Language	1,238	78	0	20	32	42	100	Cymraeg Iaith Gyntaf
Mathematics	1,380	79	0	25	35	50	100	Mathemateg
Science	1,380	79	0	20	33	50	100	Gwyddoniaeth
Core Subject Indicator	.	0	Dangosydd Pynciau Craidd

WELSH MEDIUM SCHOOLS: Schools with over 24 per cent and				YSGOLION CYMRAEG: Ysgolion â mwy na 24 y cant a hyd at 32 y cant				
	Number of Pupils <i>Nifer y Disgyblion</i>	Number of schools <i>Nifer o ysgolion</i>	Min	Lower Quartile <i>Chwartel Isaf</i>	Median <i>Canolrif</i>	Upper Quartile <i>Chwart el Uchaf</i>	Max	
English	775	42	0	21	32	42	75	Saesneg
Welsh First Language	683	41	0	14	22	33	50	Cymraeg Iaith Gyntaf
Mathematics	775	42	0	22	30	41	75	Mathemateg
Science	775	42	0	18	33	44	75	Gwyddoniaeth
Core Subject Indicator	.	0	Dangosydd Pynciau Craidd

WELSH MEDIUM SCHOOLS: Schools with over 32 per cent and				YSGOLION CYMRAEG: Ysgolion â mwy na 32 y cant a hyd at 40 y cant				
	Number of Pupils <i>Nifer y Disgyblion</i>	Number of schools <i>Nifer o ysgolion</i>	Min	Lower Quartile <i>Chwartel Isaf</i>	Median <i>Canolrif</i>	Upper Quartile <i>Chwart el Uchaf</i>	Max	
English	81	11	0	24	29	37	50	Saesneg
Welsh First Language	81	11	0	5	14	25	36	Cymraeg Iaith Gyntaf
Mathematics	81	11	0	13	29	37	50	Mathemateg
Science	81	11	0	6	33	41	50	Gwyddoniaeth
Core Subject Indicator	.	0	Dangosydd Pynciau Craidd

WELSH MEDIUM SCHOOLS: Schools with over 40 per cent				YSGOLION CYMRAEG: Ysgolion â mwy na 40 y cant yn gymwys i gael				
	Number of Pupils <i>Nifer y Disgyblion</i>	Number of schools <i>Nifer o ysgolion</i>	Min	Lower Quartile <i>Chwartel Isaf</i>	Median <i>Canolrif</i>	Upper Quartile <i>Chwartel Uchaf</i>	Max	
English	166	8	9	27	33	36	40	Saesneg
Welsh First Language	78	5	0	0	0	19	29	Cymraeg Iaith Gyntaf
Mathematics	166	8	0	13	23	33	47	Mathemateg
Science	166	8	0	16	26	29	37	Gwyddoniaeth
Core Subject Indicator	.	0	Dangosydd Pynciau Craidd

WELSH MEDIUM PRIMARY SCHOOLS				YSGOLION CYMRAEG GYNRADD				
	Number of Pupils <i>Nifer y Disgyblion</i>	Number of schools <i>Nifer o ysgolion</i>	Min	Lower Quartile <i>Chwartel Isaf</i>	Median <i>Canolrif</i>	Upper Quartile <i>Chwartel Uchaf</i>	Max	
English	7,160	424	0	26	38	50	100	Saesneg
Welsh First Language	6,394	415	0	20	33	46	100	Cymraeg Iaith Gyntaf
Mathematics	7,160	424	0	25	37	47	100	Mathemateg
Science	7,160	424	0	25	33	41	100	Gwyddoniaeth
Core Subject Indicator	.	0	Dangosydd Pynciau Craidd

Key Stage 2, English Medium Schools, 2014

All benchmarks are based on the percentage of pupils achieving the expected level plus one or above (Level 5+)

Cyfnod Allweddol 2, Ysgolion Saesneg, 2014

Mae'r holl gwarteli wedi'u seilio ar y canran o ddisgyblion sy'n cyrraedd y lefel disgwyliedig ac un (Lefel 5+)

ENGLISH MEDIUM SCHOOLS: Schools with up to 8 per cent				YSGOLION SAESNEG: Ysgolion â hyd at 8 y cant yn gymwys i gael PYD				
	Number of Pupils <i>Nifer y Disgyblion</i>	Number of schools <i>Nifer o ysgolion</i>	Min	Lower Quartile <i>Chwartel Isaf</i>	Median <i>Canolrif</i>	Upper Quartile <i>Chwartel Uchaf</i>	Max	
English	4,602	167	17	40	53	59	80	Saesneg
Mathematics	4,602	167	0	40	50	58	100	Mathemateg
Science	4,602	167	0	43	52	60	100	Gwyddoniaeth
Core Subject Indicator	.	0	Dangosydd Pynciau Craidd

ENGLISH MEDIUM SCHOOLS: Schools with over 8 per cent and				YSGOLION SAESNEG: Ysgolion â mwy na 8 y cant a hyd at 16 y cant yn				
	Number of Pupils <i>Nifer y Disgyblion</i>	Number of schools <i>Nifer o ysgolion</i>	Min	Lower Quartile <i>Chwartel Isaf</i>	Median <i>Canolrif</i>	Upper Quartile <i>Chwartel Uchaf</i>	Max	
English	5,252	190	0	35	43	51	100	Saesneg
Mathematics	5,252	190	0	33	43	50	100	Mathemateg
Science	5,252	190	0	33	44	52	83	Gwyddoniaeth
Core Subject Indicator	.	0	Dangosydd Pynciau Craidd

ENGLISH MEDIUM SCHOOLS: Schools with over 16 per cent and				YSGOLION SAESNEG: Ysgolion â mwy na 16 y cant a hyd at 24 y cant yn				
	Number of Pupils <i>Nifer y Disgyblion</i>	Number of schools <i>Nifer o ysgolion</i>	Min	Lower Quartile <i>Chwartel Isaf</i>	Median <i>Canolrif</i>	Upper Quartile <i>Chwartel Uchaf</i>	Max	
English	4,413	145	0	27	36	43	100	Saesneg
Mathematics	4,413	145	0	27	36	42	100	Mathemateg
Science	4,413	145	0	27	37	46	80	Gwyddoniaeth
Core Subject Indicator	.	0	Dangosydd Pynciau Craidd

ENGLISH MEDIUM SCHOOLS: Schools with over 24 per cent and YSGOLION SAESNEG: Ysgolion â mwy na 24 y cant a hyd at 32 y cant yn

	<i>Number of Pupils</i> <i>Nifer y Disgyblion</i>	<i>Number of schools</i> <i>Nifer o ysgolion</i>	<i>Min</i>	<i>Lower Quartile</i> <i>Chwartzel Isaf</i>	<i>Median</i> <i>Canolrif</i>	<i>Upper Quartile</i> <i>Chwartzel Uchaf</i>	<i>Max</i>	
English	4,274	143	0	26	32	40	69	Saesneg
Mathematics	4,274	143	7.142857	25	33	41	76	Mathemateg
Science	4,274	143	0	24	33	40	88	Gwyddoniaeth
Core Subject Indicator	.	0	Dangosydd Pynciau Craidd

ENGLISH MEDIUM SCHOOLS: Schools with over 32 per cent and YSGOLION SAESNEG: Ysgolion â mwy na 32 y cant a hyd at 40 y cant yn

	<i>Number of Pupils</i> <i>Nifer y Disgyblion</i>	<i>Number of schools</i> <i>Nifer o ysgolion</i>	<i>Min</i>	<i>Lower Quartile</i> <i>Chwartzel Isaf</i>	<i>Median</i> <i>Canolrif</i>	<i>Upper Quartile</i> <i>Chwartzel Uchaf</i>	<i>Max</i>	
English	2,774	93	0	24	31	39	66	Saesneg
Mathematics	2,774	93	0	23	30	38	81	Mathemateg
Science	2,774	93	0	21	30	38	66	Gwyddoniaeth
Core Subject Indicator	.	0	Dangosydd Pynciau Craidd

ENGLISH MEDIUM SCHOOLS: Schools with over 40 per cent and YSGOLION SAESNEG: Ysgolion â mwy na 40 y cant yn gymwys i gael

	<i>Number of Pupils</i> <i>Nifer y Disgyblion</i>	<i>Number of schools</i> <i>Nifer o ysgolion</i>	<i>Min</i>	<i>Lower Quartile</i> <i>Chwartzel Isaf</i>	<i>Median</i> <i>Canolrif</i>	<i>Upper Quartile</i> <i>Chwartzel Uchaf</i>	<i>Max</i>	
English	2,948	119	0	16	26	33	67	Saesneg
Mathematics	2,948	119	0	17	27	35	67	Mathemateg
Science	2,948	119	0	14	25	33	73	Gwyddoniaeth
Core Subject Indicator	.	0	Dangosydd Pynciau Craidd

ENGLISH MEDIUM PRIMARY SCHOOLS YSGOLION SAESNEG GYNRADD

	<i>Number of Pupils</i> <i>Nifer y Disgyblion</i>	<i>Number of schools</i> <i>Nifer o ysgolion</i>	<i>Min</i>	<i>Lower Quartile</i> <i>Chwartzel Isaf</i>	<i>Median</i> <i>Canolrif</i>	<i>Upper Quartile</i> <i>Chwartzel Uchaf</i>	<i>Max</i>	
English	24,263	856	0	27	38	47	100	Saesneg
Mathematics	24,263	856	0	25	37	47	100	Mathemateg
Science	24,263	856	0	25	33	41	90	Gwyddoniaeth
Core Subject Indicator	.	0	Dangosydd Pynciau Craidd

Key Stage 2: SUMMARY TABLES, 2014

Cyfnod Allweddol 2: TABLAU CRYNODEB, 2014

These tables show the average performance by subject, and by FSM band Mae'r tablau yma'n dangos y perfformiad cyfartalog yn ôl pwnc, ac yn ôl grŵp PYD.

WELSH MEDIUM PRIMARY SCHOOLS

YSGOLION CYMRAEG GYNRADD

	FSM Band/ Band PYD						ALL SCHOOLS POB YSGOL	
	up to 8% hyd at 8%	over 8% and less than 16% mwy na 8% a hyd at 16%	over 16% and less than 24% mwy na 16% a hyd at 24%	over 24% and less than 32% mwy na 24% a hyd at 32%	over 32% mwy na 32%	over 40% mwy na 40%		
English	43	38	38	29	28	25	38	Saesneg
Welsh First Language	40	33	32	23	19	17	34	Cymraeg Iaith Gyntaf
Mathematics	43	40	37	30	25	23	39	Mathemateg
Science	43	39	36	30	26	21	38	Gwyddoniaeth
Core Subject Indicator	Dangosydd Pynciau Craidd

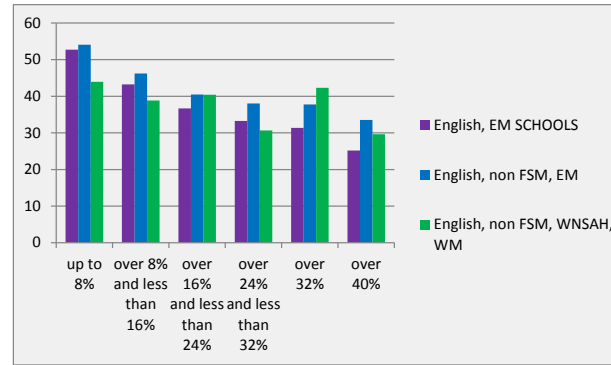
ENGLISH MEDIUM PRIMARY SCHOOLS

YSGOLION SAESNEG GYNRADD

	FSM Band/ Band PYD						ALL SCHOOLS POB YSGOL	
	up to 8% hyd at 8%	over 8% and less than 16% mwy na 8% a hyd at 16%	over 16% and less than 24% mwy na 16% a hyd at 24%	over 24% and less than 32% mwy na 24% a hyd at 32%	over 32% mwy na 32%	over 40% mwy na 40%		
English	53	43	37	33	31	25	39	Saesneg
Mathematics	51	43	36	33	32	26	38	Mathemateg
Science	53	44	38	33	31	25	39	Gwyddoniaeth
Core Subject Indicator	Dangosydd Pynciau Craidd

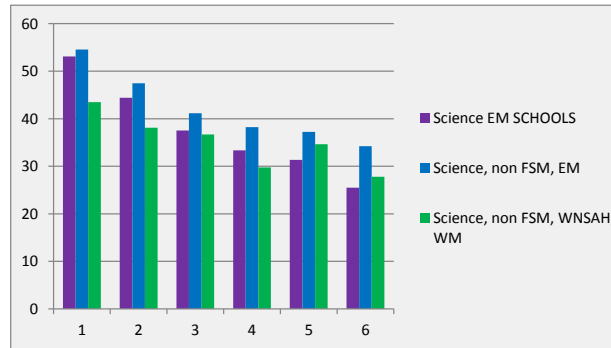
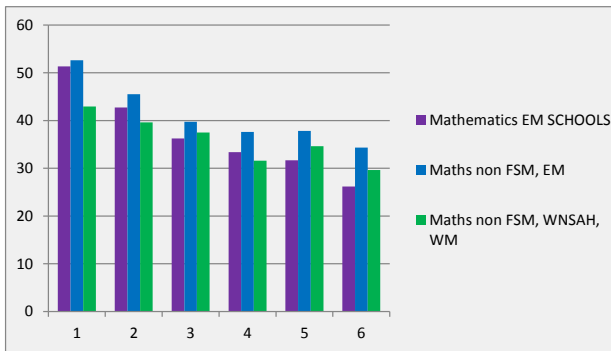
COMPARISON OF WM , NON FSM PUPILS WHO DO NOT SPEAK WELSH AT HOME WITH EM SCHOOL PUPILS NON FSM AND WHOLE EM SCHOOL OUTCC

	up to 8%	over 8% and less than 16%	over 16% and less than 24%	over 24% and less than 32%	over 32%	over 40%
English, EM SCHOOLS	53	43	37	33	31	25
English, non FSM, EM	54	46	40	38	38	34
English, non FSM, WNSAH, WM	44	39	40	31	42	30
Mathematics EM SCHOOLS	51	43	36	33	32	26
Maths non FSM, EM	53	46	40	38	38	34
Maths non FSM, WNSAH, WM	43	40	37	32	35	30
Science EM SCHOOLS	53	44	38	33	31	25
Science, non FSM, EM	55	47	41	38	37	34
Science, non FSM, WNSAH, WM	43	38	37	30	35	28
% pupils WNSAH, WM schools	30	38	20	10	1	2
number of WNSAH WM pupils	927	1188	615	326	26	54



3136

	up to 8%	over 8% and less than 16%	over 16% and less than 24%	over 24% and less than 32%	over 32%	over 40%
English, EM SCHOOLS	53	43	37	33	31	25
English, non FSM, EM	54	46	40	38	38	34
English, non FSM, WNSAH, WM	44	39	40	31	42	30
% pupils WNSAH, WM schools	30	38	20	10	1	2
number of WNSAH WM pupils	927	1188	615	326	26	54
Mathematics EM SCHOOLS	51	43	36	33	32	26
Maths non FSM, EM	53	46	40	38	38	34
Maths non FSM, WNSAH, WM	43	40	37	32	35	30
% pupils WNSAH, WM schools	30	38	20	10	1	2
number of WNSAH WM pupils	927	1188	615	326	26	54
Science EM SCHOOLS	53	44	38	33	31	25
Science, non FSM, EM	55	47	41	38	37	34
Science, non FSM, WNSAH, WM	43	38	37	30	35	28
% pupils WNSAH, WM schools	30	38	20	10	1	2
number of WNSAH WM pupils	927	1188	615	326	26	54



Please could I also present this study to the committee:

<http://www.tandfonline.com/doi/pdf/10.1080/02680939.2014.963164>

And draw their attention to the paragraph below: (page 15)

Finally, apart from the presence of Foundation Phase pilot schools we find little association between the school-level factors included in the model and any of the measures of educational attainment at age seven. The main exception to this is the language of instruction of the school the children attended. Children attending schools where Welsh is the sole or main medium of instruction had on average lower levels of Word Reading Ability scores and Maths Ability scores than equivalent children attending English medium schools (i.e. where Welsh is taught as a second language only). It is worth restating at this point that only children who undertook the Word Reading Ability assessments in English are included in the first model in Table 2). So, it may not be that surprising that given their main language of education is Welsh that they generally have lower levels of English Word Reading Ability attainment. But what is notable, then, is that they also generally had lower Maths Ability scores, irrespective of whether they undertook the maths assessment in English or its translation into Welsh. However, further inspection of the MCS reveals that many children from Welsh speaking families and who attended Welsh medium schools chose to do all the assessments in the medium of English. Hence, some of the differences in educational attainment may in part be due to their more limited English literacy skills. The role of language in determining academic achievement clearly warrants further analysis and will be the basis of future study.

The evidence that Welsh medium teaching has a negative effect on academic outcomes, particularly for pupils from English first language homes, is strong and should be born in mind when making hyperbolic claims for the benefits of Welsh medium schooling.